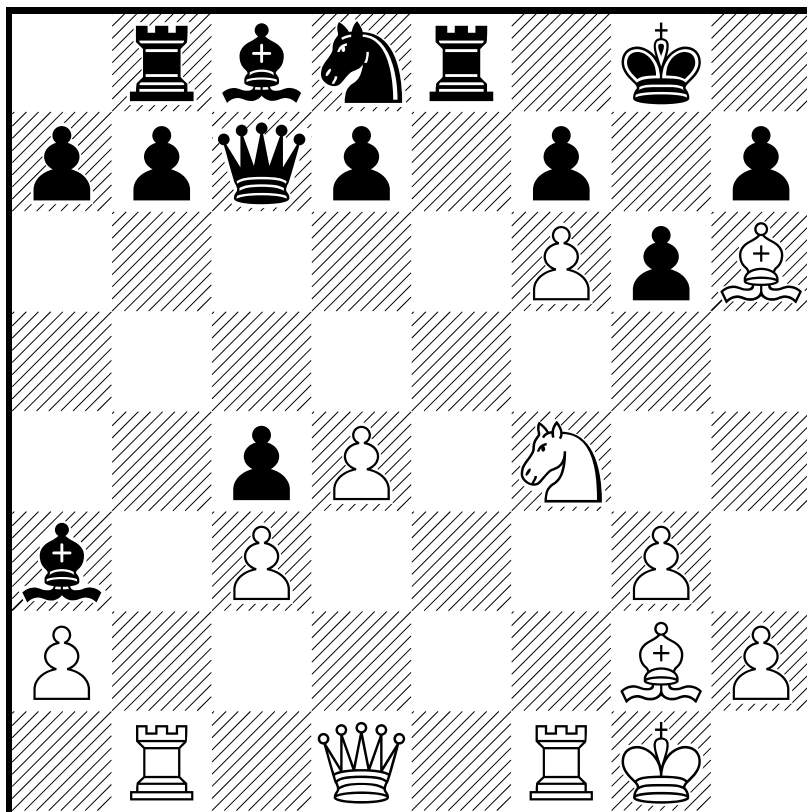


□ Salazar,Adriana
■ Ferreira,Aida

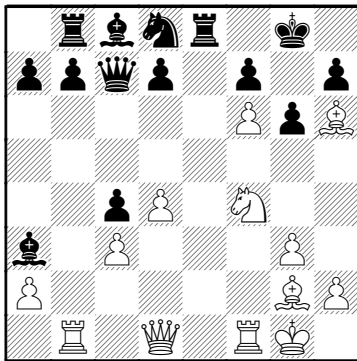


□ Salazar,Adriana

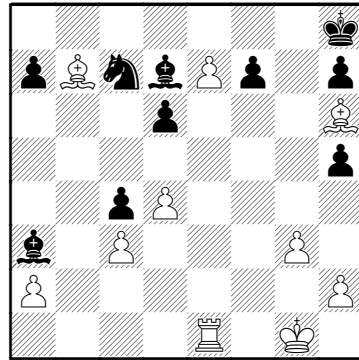
■ Ferreira,Aida

Thessaloniki ol (Women) 19.11.1984

1.e4 c5 2.♘c3 ♘c6 3.g3 g6
 4.♙g2 ♙g7 5.d3 e6 6.♙e3
 ♘d4 7.♘ge2 ♘xe2 8.♘xe2
 ♙xb2 9.♖b1 ♙a3 10.0-0 ♚c7
 11.f4 ♘e7 12.c3 c4 13.d4
 ♘c6 14.f5 exf5 15.exf5 0-0
 16.f6 ♘d8 17.♙h6 ♖e8 18.♘f4
 ♖b8

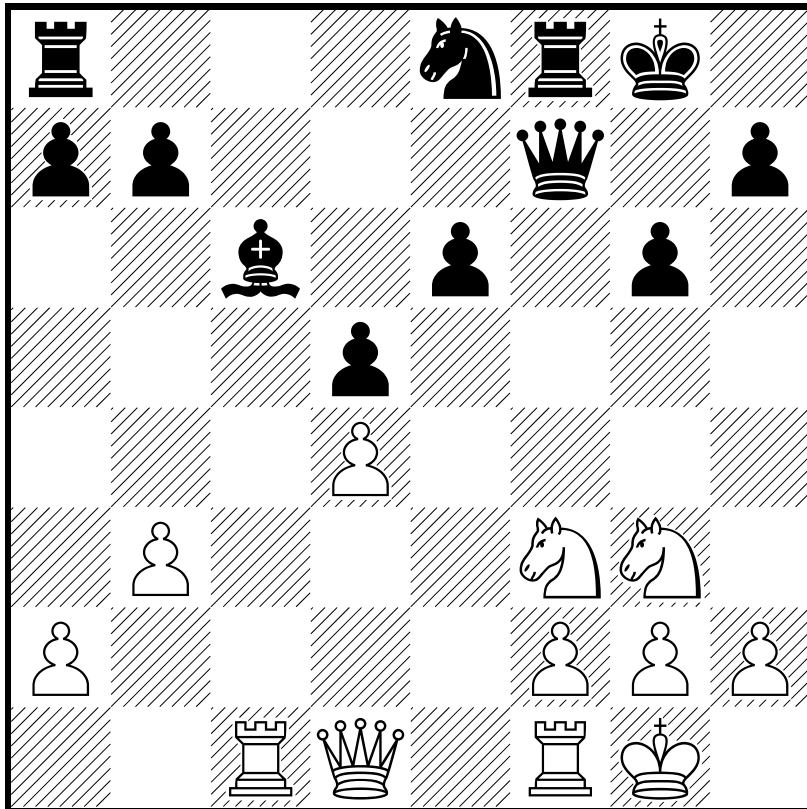


19.♘d5 ♚a5 20.♙f4 d6
 21.♘e7+ ♔h8 22.♙h6 ♘e6
 23.♖e1 ♖xe7 24.fxe7 ♙d7
 25.♚f3 ♚h5 26.♚xh5 gxh5
 27.♖xb7 ♖xb7 28.♙xb7 ♘c7



29.♙c8 ♙e8 30.♖b1 d5
 31.♖b8 ♔g8 32.♙d7
 1-0

□ Salazar,Adriana
■ Widjajanti,C

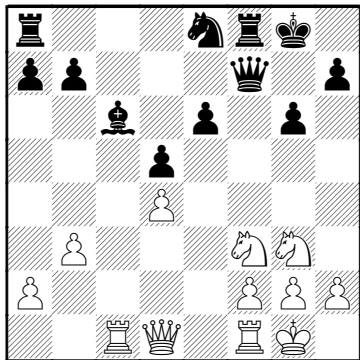


□ Salazar,Adriana

■ Widjajanti,C

Thessaloniki ol (Women) 19.11.1984

1.e4 e6 2.d4 d5 3.♘d2 ♗f6
 4.e5 ♗fd7 5.♙d3 c5 6.c3
 ♗c6 7.♗e2 ♖b6 8.♗f3 f6
 9.exf6 ♗xf6 10.0-0 ♙d6
 11.b3 cxd4 12.cxd4 0-0
 13.♙g5 ♖c7 14.♙h4 ♗f7
 15.♙g3 ♙xg3 16.♗xg3 g6
 17.♖c1 ♗e8 18.♙b5 ♙d7
 19.♙xc6 ♙xc6



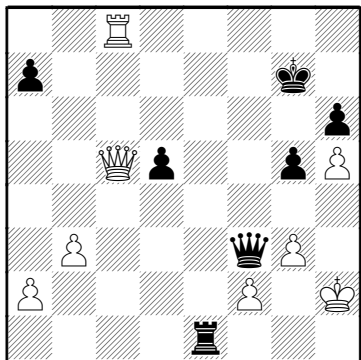
20.♗e5 El plan blanco es sencillo y se concentra en la casilla c6 donde se amenaza ganar un peón ♖c7 21.♖g4 ♗g7 22.♖c3 ♖a5 23.♖c2 ♖ac8

24.♖fc1 ♖b4 25.h4 ♖e7 26.h5 g5 27.♗xc6 bxc6 28.♖xc6 ♖xc6 29.♖xc6 El blanco materializa la ventaja de las torres dobladas h6 30.♖e2 El ataque contra el peón retrasado es el segundo tema de la partida ♖f6 31.♖e3 ♖f7 32.♖c2 ♖e8 33.♖e2 ♗f5 34.♗xf5 ♖xf5 35.♖c7

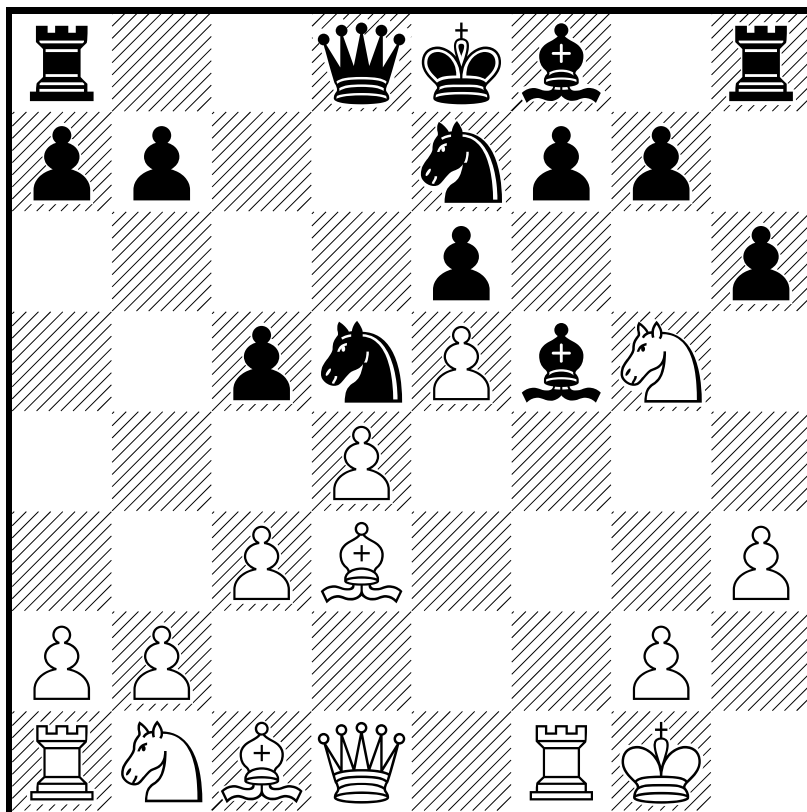
La invasión de la séptima fila con la torre deja en desventaja definitiva al negro e5 36.dxe5 ♖xe5 37.♖c8+ ♗f7 38.♖c7+ ♗f8 39.♖c2 ♖e1+ 40.♗h2 ♖f4+ 41.g3 ♖f3 42.♖c5+ ♗g8 43.♖c8+ ♗g7

(Diagrama)

44.♖xa7+
 1-0



□ Salazar, Adriana
■ Tagnon, Nicole

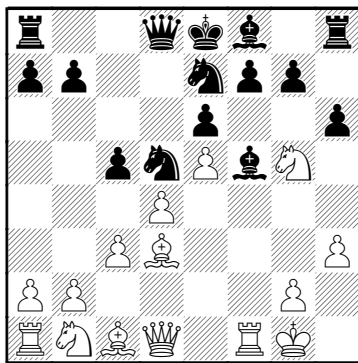


□ Salazar,Adriana

■ Tagnon,Nicole

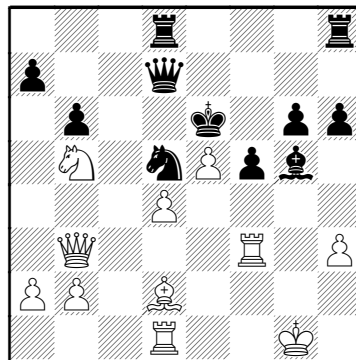
Thessaloniki ol (Women) 19.11.1984

1.e4 ♘f6 2.e5 ♘d5 3.d4 d6
4.f4 dxе5 5.fxe5 ♘c6 6.♗f3
♙g4 7.c3 e6 8.♙d3 ♗ce7
9.0-0 c5 10.h3 ♙f5 11.♗g5
h6



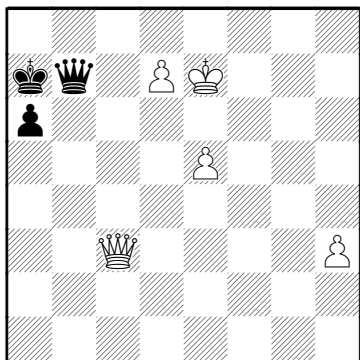
12.♗xf7 El sacrificio atrae el rey a una casilla donde queda clavado el alfil ♗xf7 13.g4 g6
14.gxf5 ♗xf5 15.♙xf5 exf5
16.♙f3 cxd4 17.cxd4 ♗d7
18.♗c3 ♗d8 19.♙e1 ♗e6
El rey ha quedado expuesto en el centro 20.♙d2 ♙b4 21.♙ad1
♙e7 22.♗e2 ♗dg8 23.♙b3

♙g5 24.♙f1 ♗e7 25.♙f3 b6
26.♗c3 ♗d8 27.♗b5 ♗e6



28.♙c3 La ventaja del blanco es definitiva ♙c8 29.♗d6
el blanco ha perfeccionado la penetración en campo con esta centralización ♙c7 30.♙xg5
hxg5 31.♙dc1 ♙xc3 32.♙xc3
axg5 33.♗c4 ♙b8 34.♗e3 ♗d8
35.♗xd5 ♙xd5 36.♙xb6+ ♗e7
37.♙c7+ ♗d7 38.♙f6+ ♗e8
39.♙xg6+ ♗d8 40.♙xd7+
♙xd7 41.♙xg5+ ♗c7 42.♙c1+
♗b7 43.♙c5 ♙g7+ 44.♗f2
♙g5 45.♙b4+ ♗a7 46.d5 f4
47.♙d4+ ♗b7 48.♙c3 ♙h4+
49.♗f3 ♙g3+ 50.♗e4 ♙f2

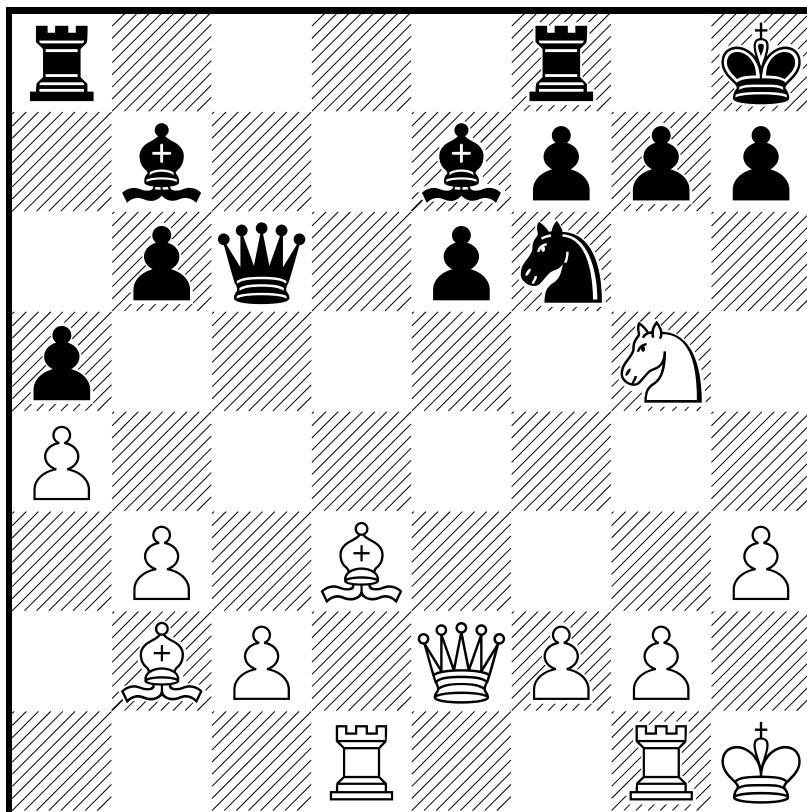
51.♔f3 ♕d2 52.♕xf4 ♔xb2
 53.♕f7+ ♖b8 54.♕e8+ ♗a7
 55.♕d7+ ♘a8 56.♕c8+ ♙a7
 57.♕c7+ ♚a8 58.d6 ♗g2+
 59.♔d4 ♕b2+ 60.♕c3 ♕f2+
 61.♔d5 ♕xa2+ 62.♔c6 ♕g2+
 63.♔c7 ♕b7+ 64.♔d8 ♕b6+
 65.♔e7 ♕b7+ 66.d7 ♔a7



○

67.♕c5+
 1-0

□ Salazar,Adriana
■ Iacono,R

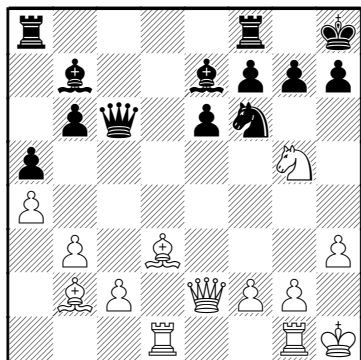


□ Salazar,Adriana

■ Iacono,R

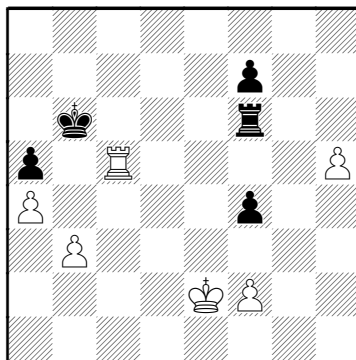
Thessaloniki ol (Women) 19.11.1984

1.e4 e6 2.d4 d5 3.♘d2 c5
 4.exd5 ♖xd5 5.♗g3 cxd4
 6.♙c4 ♗d6 7.♗b3 ♗c6 8.0-0
 ♗f6 9.♗bxd4 ♗xd4 10.♗xd4
 a6 11.a4 ♗c7 12.b3 ♙d6
 13.h3 0-0 14.♙b2 b6 15.♗e2
 ♙b7 16.♖ad1 ♔h8 17.♙d3
 ♙h2+ 18.♔h1 ♙d6 19.♗f3 a5
 20.♗g5 ♗c6 21.♖g1 ♙e7



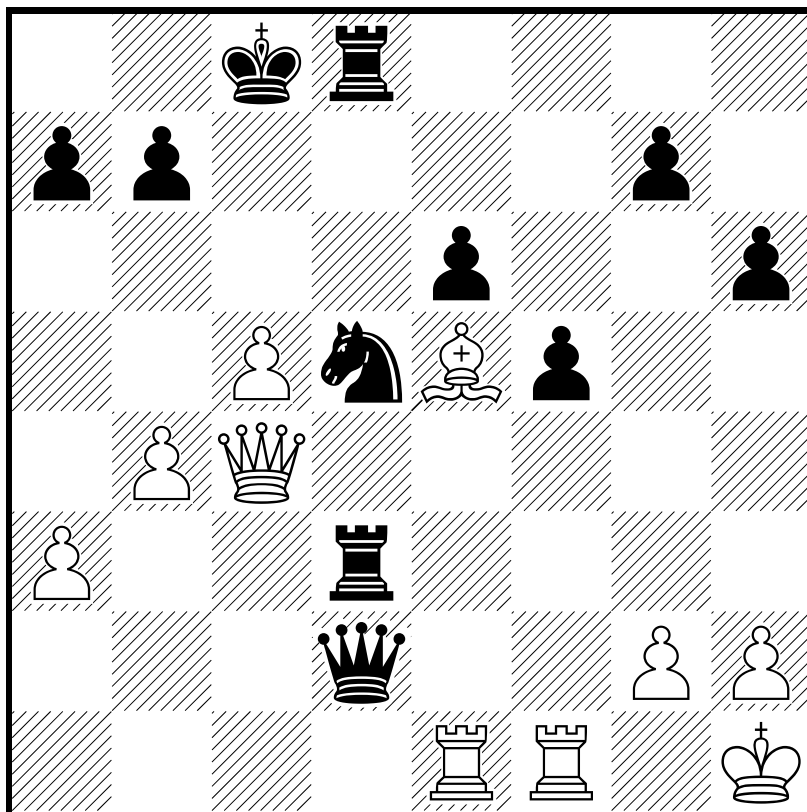
22.♙xf6 ♙xf6 23.♙e4 ♗c7
 24.♗xh7 ♙xe4 25.♗xe4 ♖fd8
 26.♗xf6 gxf6 el rey negro ha
 quedado en descubierto 27.♖d3

♗xd3 28.♗xa8+ ♖d8 29.♗f3
 ♔g7 30.♗g4+ ♔f8 31.♖d1
 ♖c8 32.♖d2 ♗e5 33.♗e2
 ♗xe2 34.♖xe2 ♖d8 35.g3 e5
 36.♔g2 ♖d5 37.♔f3 f5
 38.♔e3 ♔e7 39.♖d2 f4+
 40.gxf4 exf4+ 41.♔e2 ♖h5
 42.♖d3 ♔e6 43.c4 ♖h6
 44.♖d5 ♔e7 45.♖b5 ♔d7
 46.h4 ♔c7 47.h5 ♖f6 48.c5
 bxc5 49.♖xc5+ ♔b6



50.♖b5+
 1-0

□ Salazar,Adriana
■ Mira,Helene



□ Salazar,Adriana

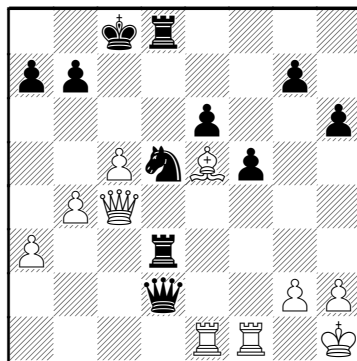
■ Mira,Helene

Thessaloniki ol (Women) 19.11.1984

1.e4 ♘f6 2.e5 ♘d5 3.d4 d6
 4.f4 dxe5 5.fxe5 ♙f5 6.♘f3
 e6 7.♙d3 ♙xd3 8.♚xd3 ♚d7
 9.0-0 h6 10.c3 c5 11.♘bd2
 ♘c6 12.a3 cxd4 13.cxd4 ♙e7
 14.♘e4 0-0-0 15.b4 f5
 16.♘c5 ♙xc5 17.dxc5 ♘c7
 18.♚b1 ♚d3 19.♚a2 ♘xe5
 20.♘xe5 ♚d4+ 21.♔h1 ♚xe5
 22.♙b2 ♚e2 23.♙ae1 ♚c2
 24.♙c1 ♚e2 25.♙ce1 ♚d2
 26.♚b3 ♙d3 27.♚c4 ♙hd8
 28.♙e5 ♘d5

(Diagrama)

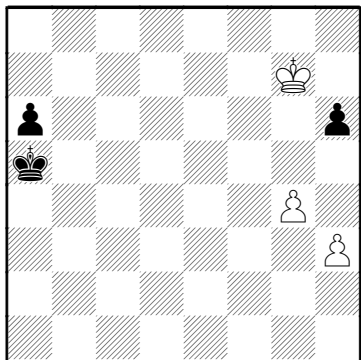
29.c6 La ruptura definitiva
 obliga al negro a entregar
 calidad para atenuar la fuerza
 del ataque con el desvío forzado
 del alfil ♙c3 30.♙xc3 ♚xc3
 31.cxb7+ ♔xb7 32.♚xc3
 ♘xc3 33.♙xe6 ♙d7 34.h3
 ♘b5 35.a4 ♘c3 36.a5 ♘e4
 37.♔h2 ♘d6 38.♙d1 ♔c6
 39.♔g3 a6 40.♔f4 ♔c7



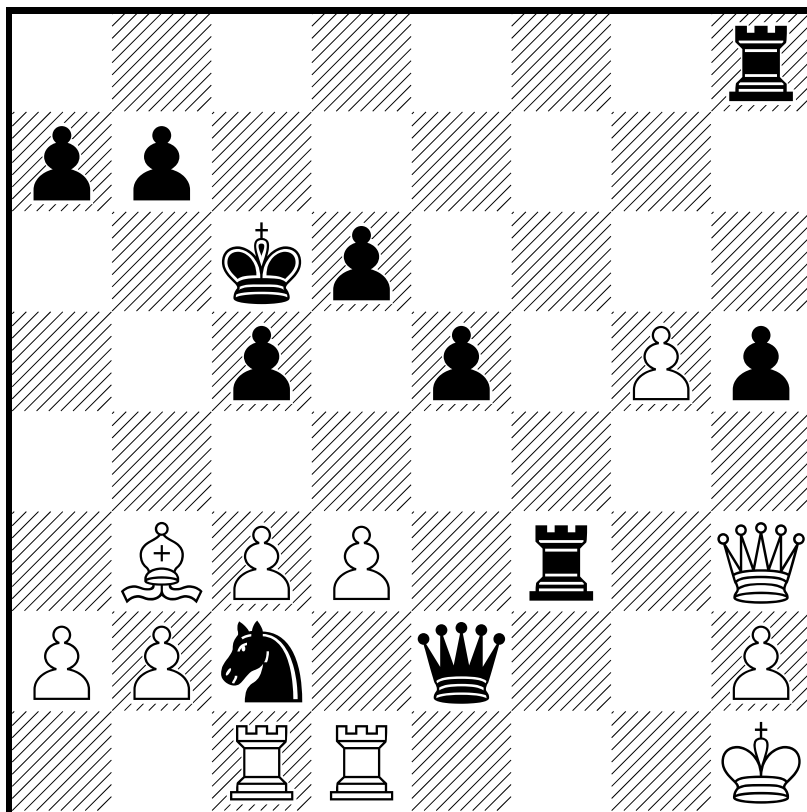
41.♙xd6 ♙xd6 42.♙xd6 ♔xd6
 43.♔xf5 era previsible la
 simplificación para entrar en una
 final ganador ♔c6 44.g4 ♔b5
 45.♔g6 ♔xb4 46.♔xg7 ♔xa5

(Diagrama)

47.♔xh6
 1-0



□ Salazar,Adriana
■ Kondou,Eva

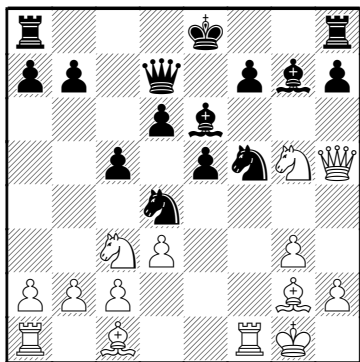


□ Salazar,Adriana

■ Kondou,Eva

Thessaloniki ol (Women) 19.11.1984

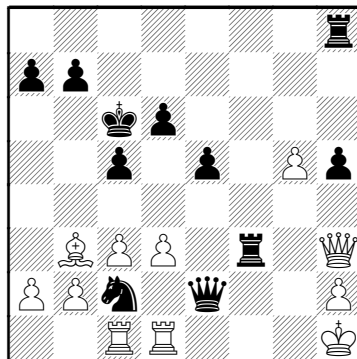
1.e4 c5 2.♘c3 ♘c6 3.g3 g6
4.♙g2 ♙g7 5.d3 d6 6.f4 e5
7.♗h3 ♗ge7 8.0-0 ♗d4 9.f5
gxf5 10.♚h5 ♙e6 11.♗g5
♚d7 12.exf5 ♗exf5



13.g4 ♗h6 La lateralización
forzada del caballo deja al negro
en inferioridad posicional

14.♗xe6 ♚xe6 15.♙xh6 ♙xh6
16.♙d5 ♙e3+ 17.♚h1 ♚e7
18.♙xf7+ ♚d7 El rey negro ha
quedado en el centro y sometido
a ataque 19.♗d5 ♚g5
20.♗xe3 ♚xe3 21.♞ae1 ♚d2

22.c3 ♗c2 23.♙e6+ ♚c6
[23...♚xe6 24.♚f7#] 24.♞d1
♚e2 25.♚h3 ♞af8 26.♞c1 h5
27.g5 ♚d2 28.♞fd1 ♚e2
29.♙b3 ♞f3



30.♞d2 ♚e3 31.♚g2 ♗e1
32.♚e2 ♚xe2 33.♞xe2 ♗xd3
34.♞d1 ♗f4 35.♞ed2 ♚c7
36.♞xd6 ♞f8 37.♞d7+ ♚c8
38.♞e7 ♗d3 39.♚g1 ♞d8
40.g6 ♗xb2

(Diagrama)

41.♙e6+
1-0

