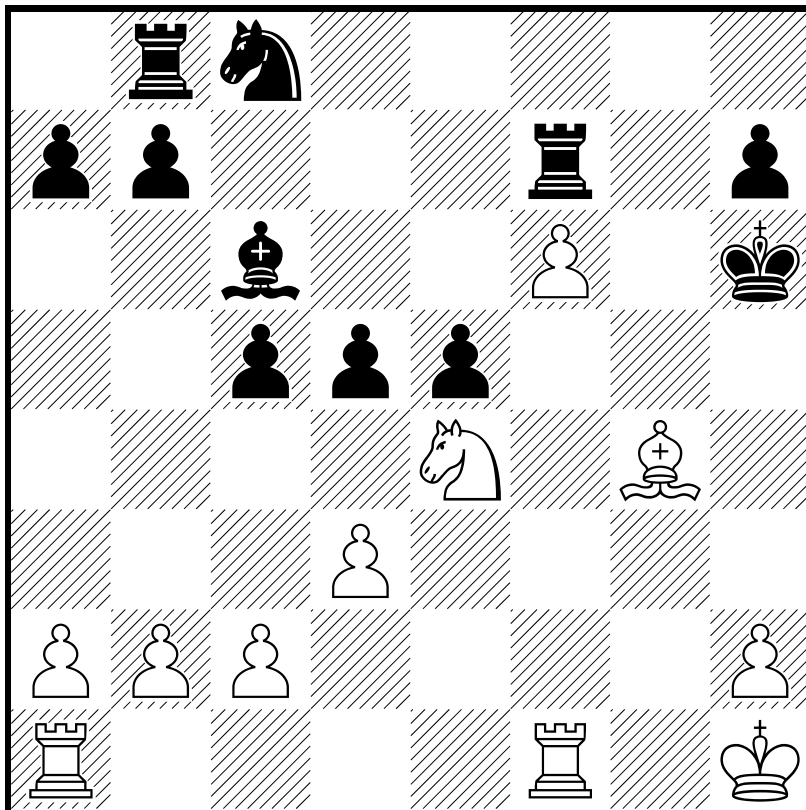


□ Salazar, Adriana
■ Crotto, Rachel



□ Salazar, Adriana

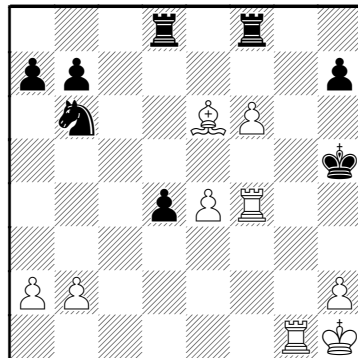
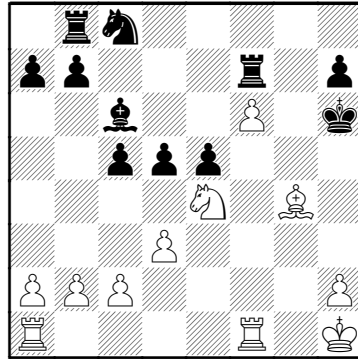
■ Crotto, Rachel

Dubai ol (Women) 11.1986

1.e4 c5 2.♘c3 ♘c6 3.g3 g6
 4.♙g2 ♙g7 5.d3 d6 6.f4 e5
 7.♗h3 ♗ge7 8.0-0 0-0 9.f5
 gxf5 10.exf5 f6 11.♗d5 ♗xd5
 12.♙xd5+ ♔h8 13.♚h5 ♚e8
 Forzada para evitar la entrada
 del alfil en f7 14.♚xe8 ♜xe8
 15.g4 ♗e7 16.♙g2 ♜b8
 17.♗f2 ♙d7 18.♗e4 ♗c8
 19.g5 ♜f8 20.gxf6 ♙xf6
 21.♙h6 ♜f7 22.♙f3 ♙g7
 23.♙xg7+ ♔xg7 [23...♜xg7+
 24.♙g2 Dejaba al blanco con
 ventaja por la fuerza del peón f5
 libre] 24.f6+ ♔h6 25.♔h1 ♙c6
 26.♙g4 d5

(Diagrama)

27.♙e6 ♜f8 28.♗xc5 ♗b6
 29.♜f3 e4 30.♜f4 exd3
 31.cxd3 d4+ 32.♗e4 ♙xe4+
 33.dxe4 ♜bd8 34.♜g1 ♔h5
 Diagrama
 35.♜f3
 1-0

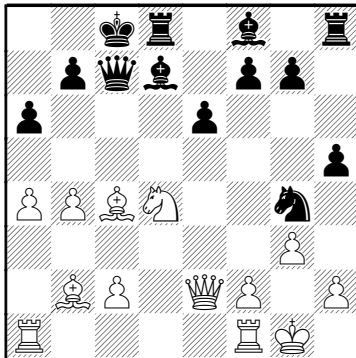


□ Salazar,Adriana

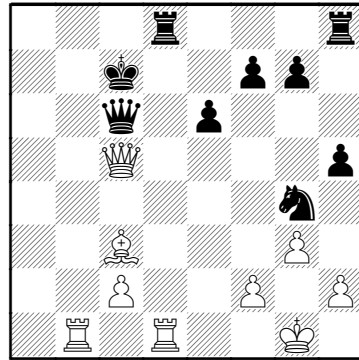
■ Fauland Borek,Jutta

Dubai ol (Women) 11.1986

1.e4 e6 2.d4 d5 3.♘d2 c5
 4.exd5 ♖xd5 5.♗gf3 cxd4
 6.♙c4 ♗d6 7.0-0 ♘f6 8.♗b3
 ♘c6 9.♗bxd4 ♘xd4 10.♗xd4
 ♙d7 11.b3 0-0-0 12.♙b2 ♖c7
 13.♗e2 h5 14.a4 ♘g4 15.g3
 a6 16.b4

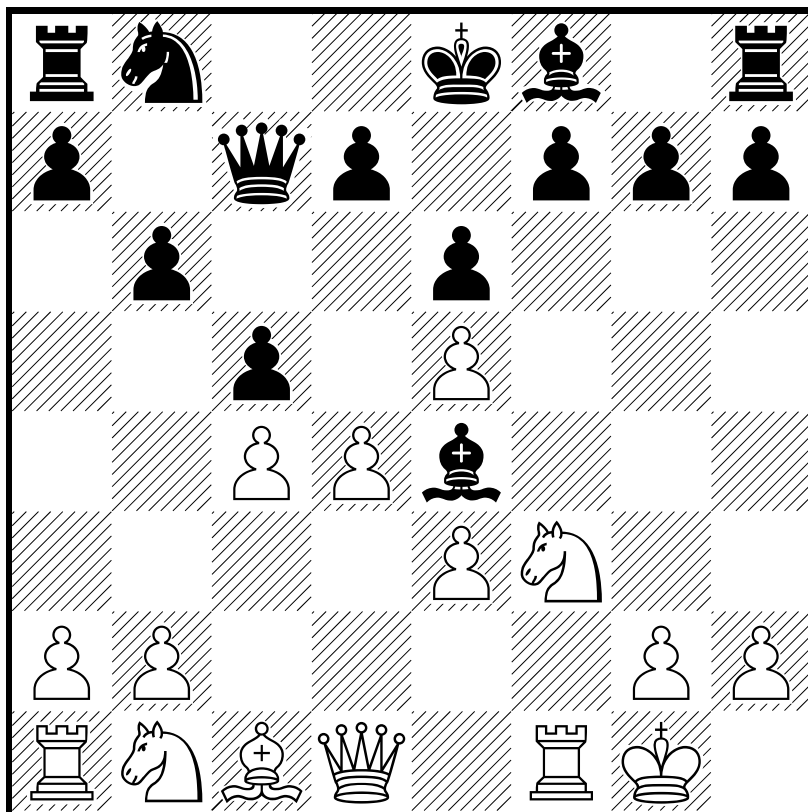


♙xb4 17.♖ab1 La apertura de
 la columna b2 compensa el
 peón entregado ♙d6 18.♙xa6
 bxa6 19.♗xa6+ ♖b7 20.♗xd6
 ♙xa4 21.♗a3 ♙c6 22.♗c5
 ♘d7 23.♙c3 ♖a8 24.♗xc6
 ♗xc6 25.♖fd1+ ♘c7 Diagrama



26.♙a5+
 1-0

□ Salazar,Adriana
■ Caels,Viviane



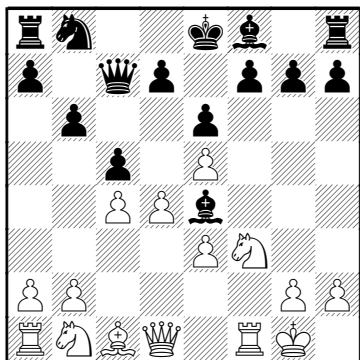
□ Salazar,Adriana

■ Caels,Viviane

Dubai ol (Women)

11.1986

1.e4 e6 2.d4 b6 3.♘f3 ♘b7
4.♙d3 c5 5.0-0 ♗f6 6.e5
♗d5 7.♙e4 ♚c7 8.c4 ♘e3
9.fxex3 ♙xe4

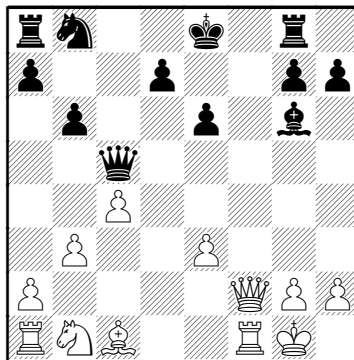


10.♗g5 ♚b7 11.♗xf7 ♖g8
12.♚e2 ♙g6 13.♚f2 ♚c6
14.b3 ♙e7 15.♗d6+ ♙xd6
16.exd6 ♚xd6 17.dxc5 ♚xc5

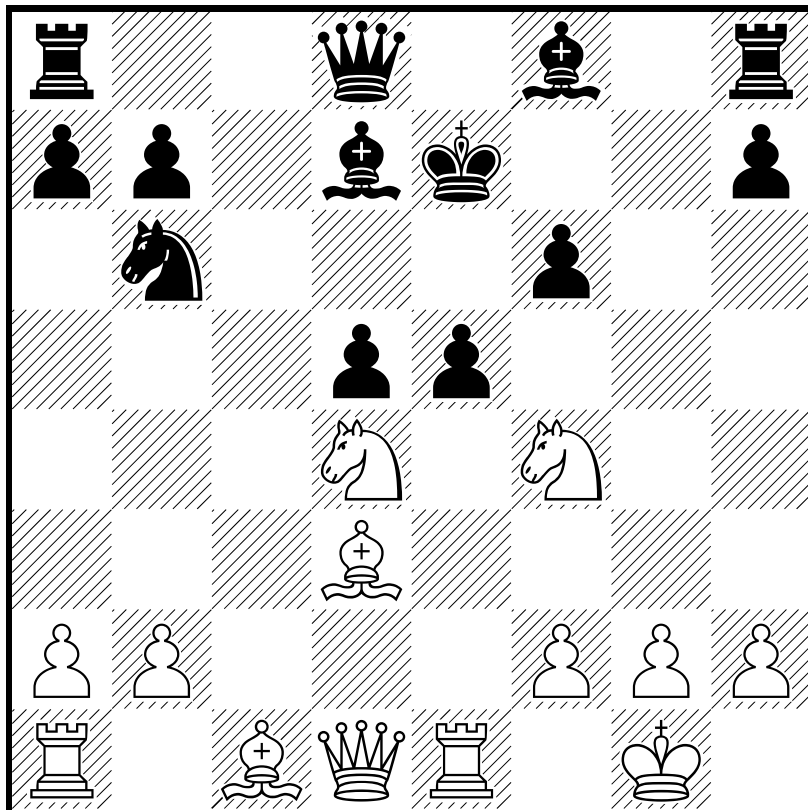
(Diagrama)

18.♙a3

1-0



□ Salazar,Adriana
■ Iacono,R

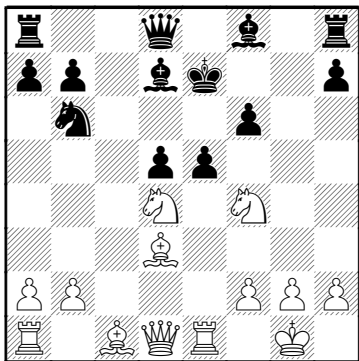


□ Salazar,Adriana

■ Iacono,R

Dubai ol (Women) 11.1986

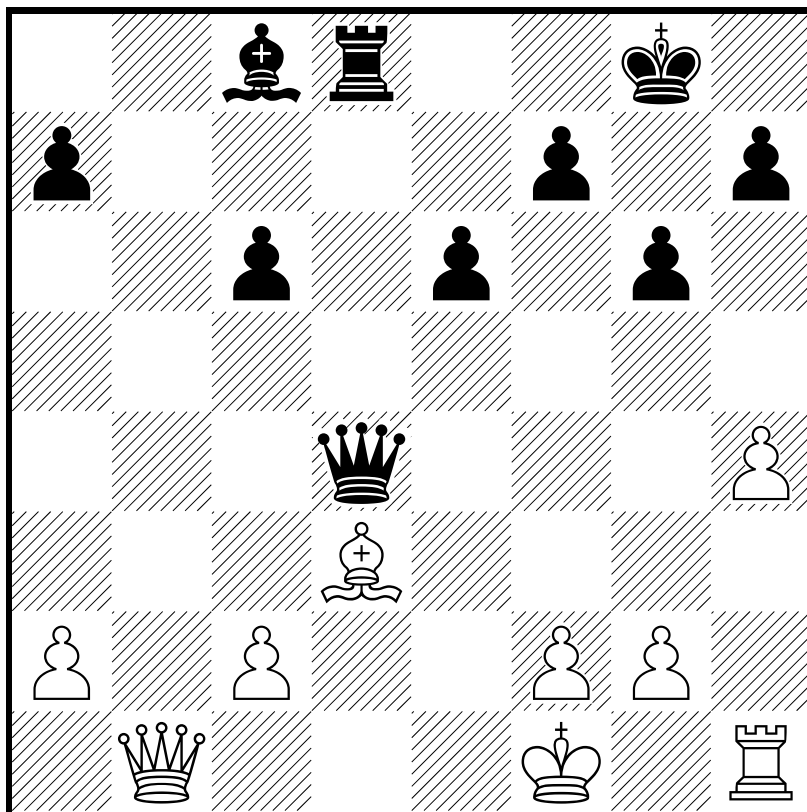
1.e4 e6 2.d4 d5 3.♘d2 ♘f6
 4.e5 ♘fd7 5.c3 c5 6.♙d3
 ♘c6 7.♘e2 f6 8.♘f4 ♔e7
 9.exf6+ gxf6 10.♘f3 cxd4
 11.cxd4 ♘b6 12.0-0 ♙d7
 13.♖e1 ♘xd4? El tenedor del
 peón e5 induce al error fatal del
 negro 14.♘xd4 e5 Diagrama



15.♙f5

1-0

□ De los Santos, Isabel
■ Salazar, Adriana

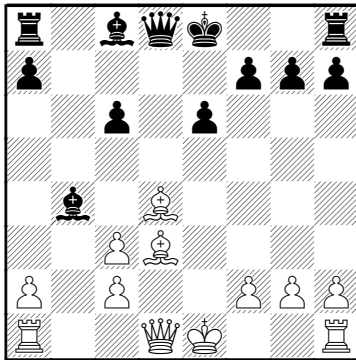


□ De los Santos, Isabel

■ Salazar, Adriana

Dubai ol (Women) 11.1986

1.e4 c5 2.♘f3 e6 3.d4 cxd4
4.♘xd4 ♘f6 5.♘c3 ♘c6
6.♙e3 ♙b4 7.♙d3 d5 8.exd5
♘xd5 9.♘xc6 bxc6 10.♙d4
♘xc3 11.bxc3



♙xd4 12.cxb4 ♙xb4+

Deja al rey blanco ♙ en el centro y la torre h1 queda encerrada

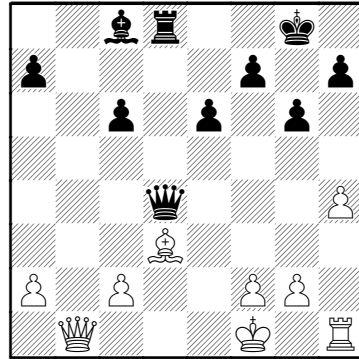
13.♘f1 0-0 14.♙h5 g6

15.♙e5 ♘d8 16.h4 ♙d4

17.♙e1 la iniciativa está de parte del negro ♘b8 18.♙b1 ♙xb1

19.♙xb1 Diagrama

♙a6 20.♙h3 [20.♙xa6 ♙d1+



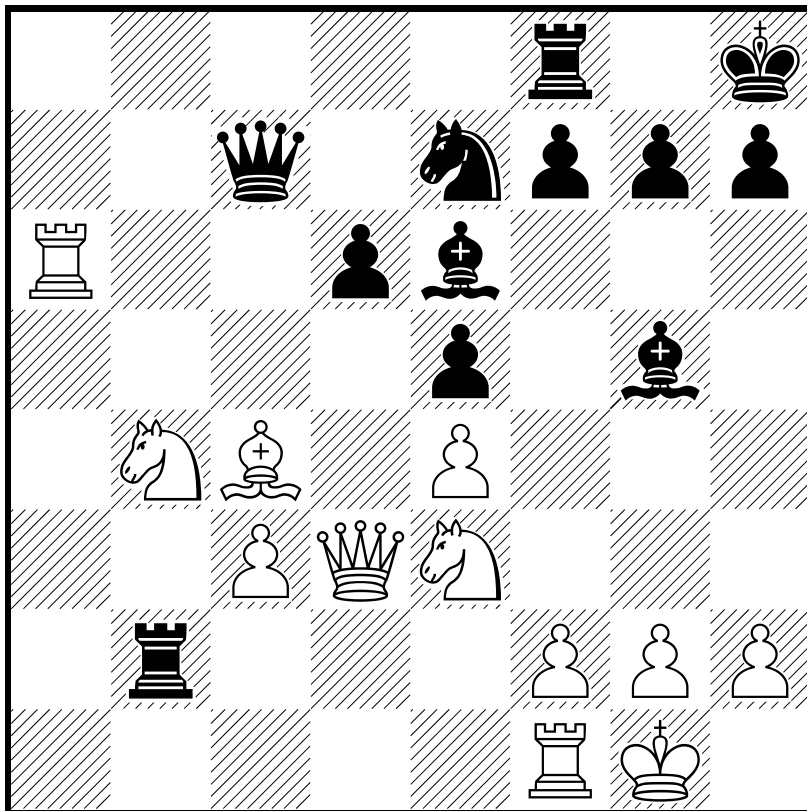
gana calidad después del intercambio] 20...♙g4

La amenaza sobre la casilla d1 con la torre continúa 21.♙b3??

Deja la defensa de la última línea y en situación de mate a su rey

0-1

□ Cooper,Deborah
■ Salazar,Adriana



□ Cooper, Deborah

■ Salazar, Adriana

Dubai ol (Women) 11.1986

1.e4 c5 2.♘f3 e6 3.d4 cxd4
 4.♘xd4 ♘f6 5.♘c3 ♘c6
 6.♘db5 d6 7.♙f4 e5 8.♙g5 a6
 9.♘a3 b5 10.♘d5 ♙e7
 11.♙xf6 ♙xf6 12.c3 0-0
 13.♘c2 ♙g5 14.a4 bxa4
 15.♞xa4 a5 16.♙c4 ♙e6
 17.♘ce3 ♞b8 18.♞a2 ♚d7
 19.0-0 ♔h8 20.♚d3 ♘e7
 21.♞xa5 ♞xb2 22.♘b4?

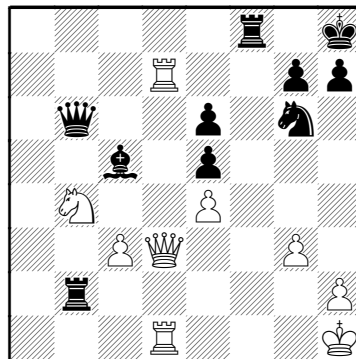
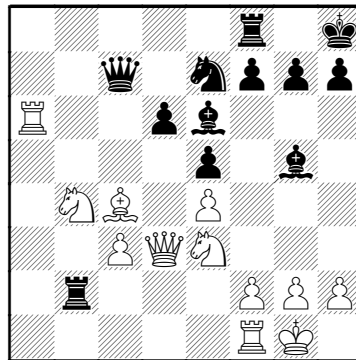
El intento de atrapar la torre deja
 igualada la situación para el
 negro ♚c7 23.♞a6

(Diagrama)

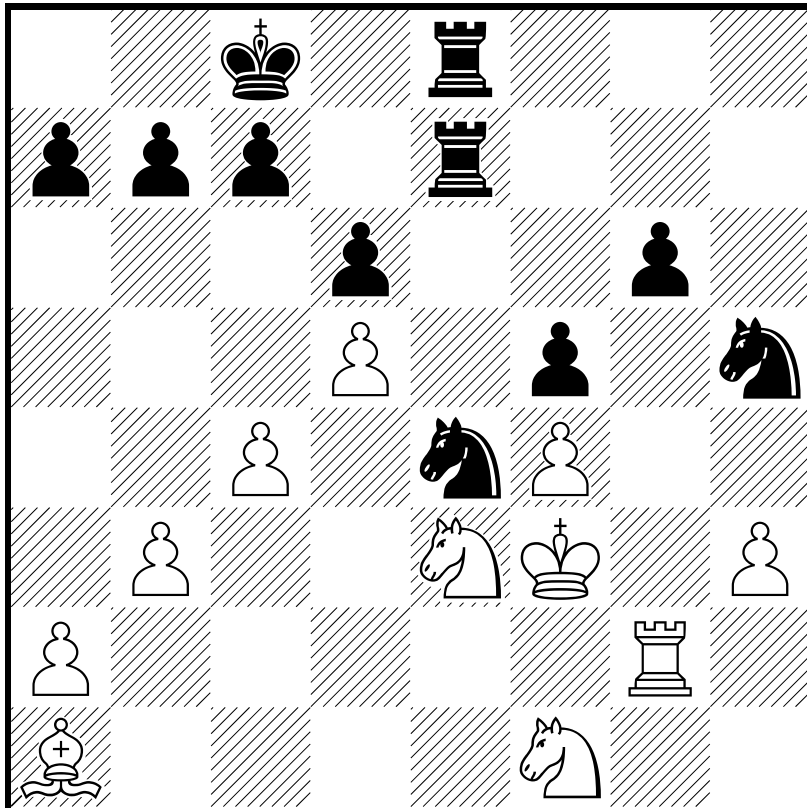
♙xe3 24.♙xe6 ♙xf2+ 25.♔h1
 fxe6 26.♞xd6 ♘g6 27.♞d7
 ♚b6 28.g3 ♙c5 29.♞d1

(Diagrama)

♙xb4
 0-1



□ Martinez, Virginia
■ Salazar, Adriana

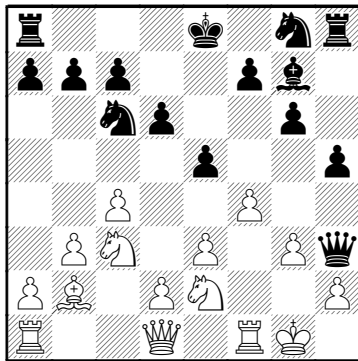


□ Martinez, Virginia

■ Salazar, Adriana

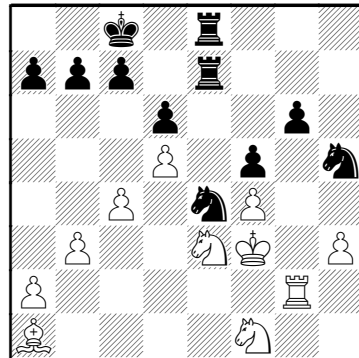
Dubai ol (Women) 11.1986

1.c4 e5 2.♘c3 g6 3.g3 ♕g7
4.♖g2 ♘c6 5.e3 d6 6.♘ge2
♖e6 7.b3 ♔d7 8.♖b2 ♖h3
9.0-0 h5 10.♖xh3 ♔xh3 11.f4



h4 El negro en posición superior y con la iniciativa
12.♖f2 hxg3 13.♘xg3 exf4
14.exf4 ♖d4 15.♘f1 ♖xf2+
16.♔xf2 0-0-0 17.♘d5 ♖h5
18.♔f3 ♘ce7 19.♔xh3+ ♖xh3
20.♘de3 ♖e8 21.d4 ♘f6 22.d5
♘e4+ 23.♔g2 ♖h7 24.♖e1 f5
25.♖e2 ♘g8 26.♖a1 ♖he7

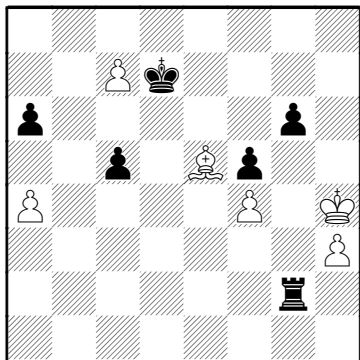
27.♔f3 ♘gf6 28.h3 ♘h5
29.♖g2



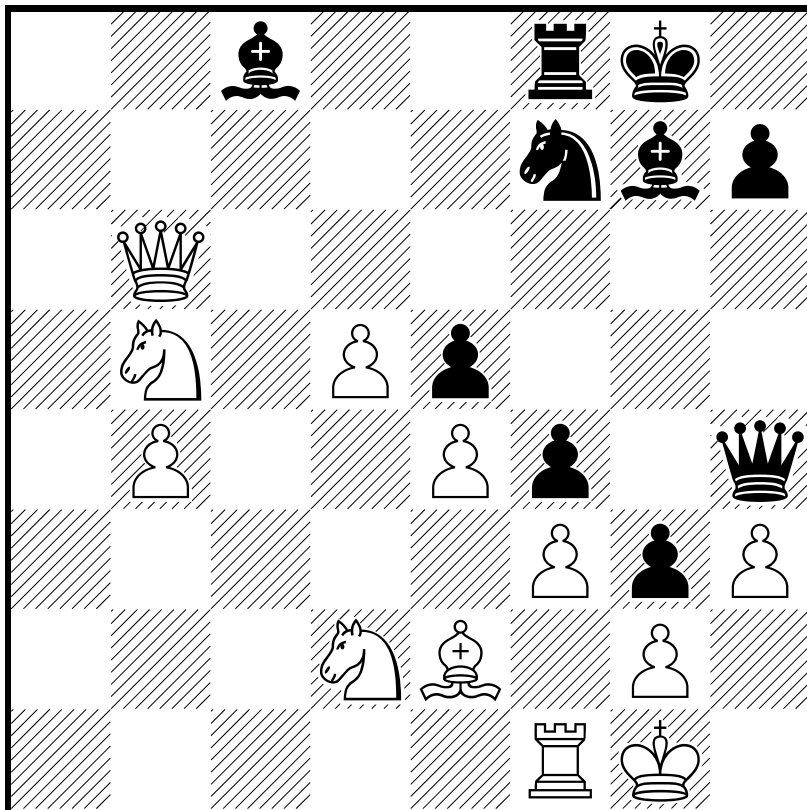
♘eg3 30.♖xg3 ♘xg3
31.♔xg3 ♖xe3+ 32.♘xe3
♖xe3+ 33.♔h4 ♖e1 34.♖f6
♖g1 35.b4 a6 36.c5 ♔d7
37.a4 dxc5 38.bxc5 ♖g2
39.♖e5 b6 40.d6 bxc5
41.dxc7

(Diagrama)

c4
0-1



□ Gruenenwald,Evi
■ Salazar,Adriana



□ Gruenenwald,Evi

■ Salazar,Adriana

Dubai ol (Women) 11.1986

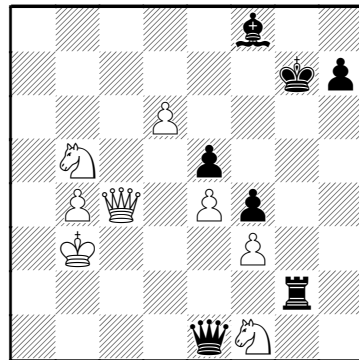
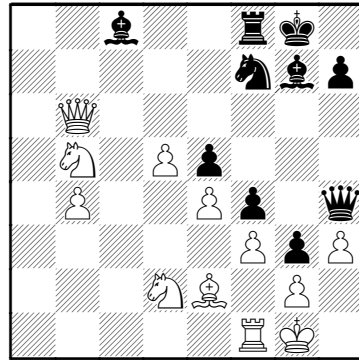
1.d4 ♘f6 2.c4 d6 3.♘c3
 ♘bd7 4.e4 e5 5.♘f3 g6
 6.♙e2 ♙g7 7.0-0 0-0 8.♙e3
 ♘g4 9.♙g5 f6 10.♙d2 ♘h6
 11.d5 a5 12.a3 ♘c5 13.b4
 axb4 14.axb4 ♖xa1 15.♚xa1
 ♘b3 16.♚a2 ♘xd2 17.♘xd2
 El negro ha igualado el juego f5
 18.c5? f4 19.♘b5 g5 20.cxd6
 cxd6 21.♚a5 b6 22.♚a7 g4
 23.♚c7 ♚g5 24.f3 g3 25.h3
 ♚h4 26.♚xd6 ♘f7 27.♚xb6

(Diagrama)

♙xh3 28.gxh3 ♘g5 29.♙c4
 ♚xh3 30.♖f2 gxf2+ 31.♚xf2
 ♖f6 32.♚g2 ♚h4 33.♙f1 ♖g6
 34.♚g4 ♚h2 35.d6+ ♘f7
 36.♚c8+ ♙f8 37.♙xf7+ ♙xf7
 38.♚c4+ ♙g7 39.♙e1 ♖g1+
 40.♘f1 ♚g3+ 41.♙d2 ♖g2+
 42.♙c3 ♚e1+ 43.♙b3

Diagrama

♚d1+ La dama debe perderse



en unas jugadas más
 0-1