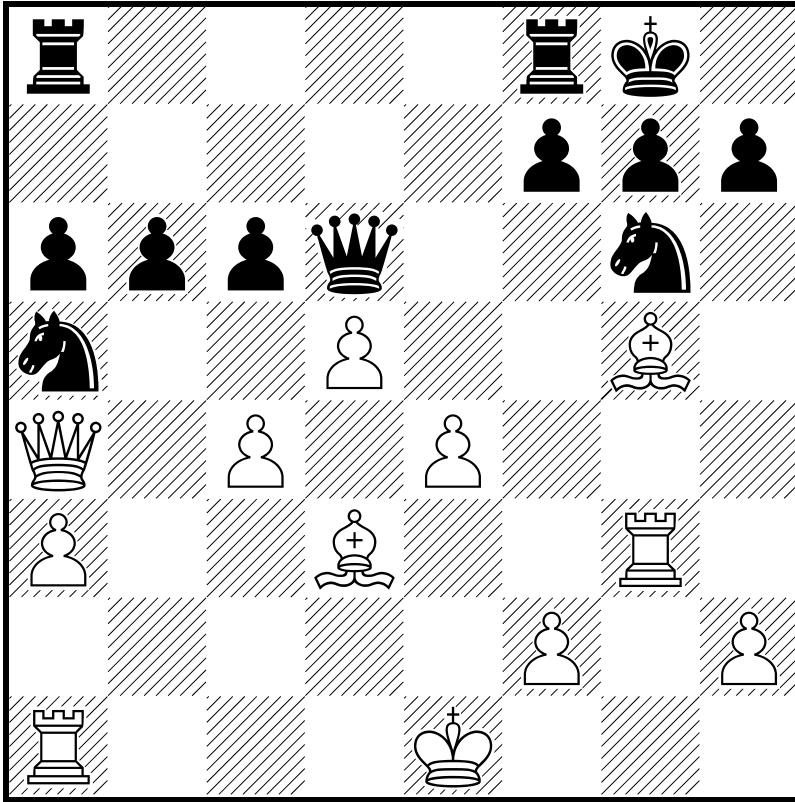


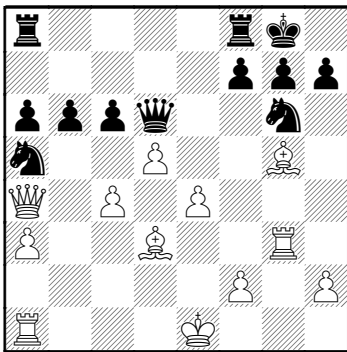
□ Onischuk,Alexander  
■ Miton,Kamil



**Onischuk, Alexander** 2668  

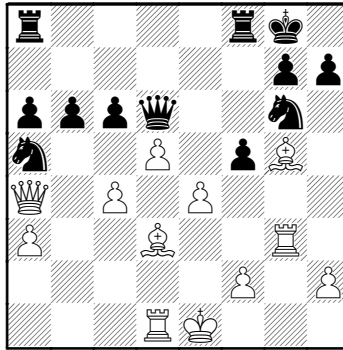
**Miton, Kamil** 2638  
 Montreal Empresa 2006.08.2006

1.d4 d5 2.c4 dxc4 3.e4 ♘c6  
 4.♘f3 ♗g4 5.♗xc4 e6 6.♗b5  
 ♗xf3 7.gxf3 ♗b4+ 8.♘c3  
 ♘ge7 9.a3 ♗xc3+ 10.bxc3 a6  
 11.♗d3 e5 12.d5 ♘a5 13.f4  
 exf4 14.♗xf4 0-0 15.♖g1 ♘g6  
 16.♗g5 ♔d6 17.♖g3 c6  
 18.♔a4 b6 19.c4 Diagrama



**f5!** Hasta esta jugada la igualdad era total, ahora el negro gana este tiempo y espacio con el peón f por la imposibilidad de

tomarlo **20.♖d1** Diagrama  
 [ 20.exf5?? ♔e5+ ]



**20...f4** No solo implica desajalar la torre de la línea central sino que se ha incomunicado al alfil que ahora puede ser objeto de cacería por no disponer de salida. **21.♖g1 ♘e5**

Esta jugada previa evita el contrajuego del blanco tratando de salvar el alfil encerrado en g5  
**22.♗e2 c5** Yo creo que a partir de esta posición la suerte del blanco esta determinada, los caballos en las líneas centrales tienen paralizada el ala dama con amenaza directa sobre el

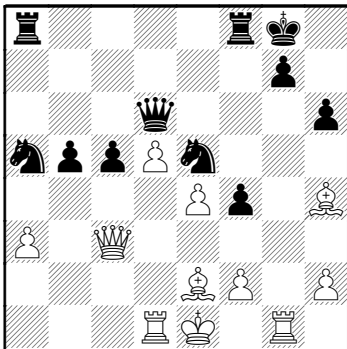
peón C4, por contra parte los alfiles blancos estan relegados a influir en casillas livianas.

**23. ♖c2 h6 24. ♗h4**

[ Es evidente que si 24. ♗xh6 ♖xh6 ] **24...b5** El juego se desplaza al flanco opuesto luego de haber controlado el alfil que sabe la suerte de su futuro

**25.cxb5 axb5 26. ♖c3**

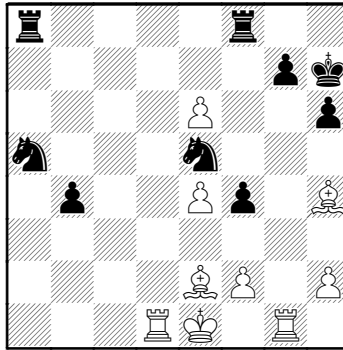
Diagrama



**b4 27.axb4 cxb4 28. ♖h3**

♗h7 **29. ♖e6** Desesperada, el peón b5 no tiene detenerse y el blanco no tiene a mano una jugada que de algun contrajuego **♖xe6** La anterior era una jugada

forzada que trata de valorizar el peón d **30.dxe6** Diagrama

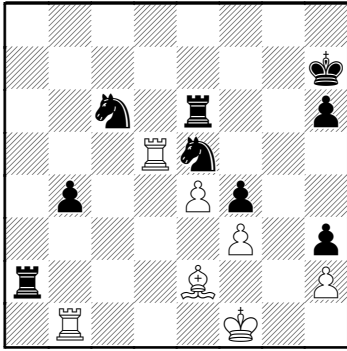


**g5** Finalmente se materializa la ventaja **31. ♗f1** [ 31. ♗xg5 hxg5 32. ♖xg5 ♗ac6 ] **31...gxh4 32. ♖d5 ♗ac6 33.f3 ♖fe8 34. ♗f2 ♖xe6 35. ♖b1 ♖a2 36. ♗f1 h3** Diagrama

(Diagrama)

El peón b tiene el camino plano para avanzar, la ventaja material está sellada, ¿que otra cosa puede ser más sensata que resignar?

**0-1**



September 10, 2006

Chess

# Chigorin Liked to Use Knights; Maybe He Had the Right Idea

By ROBERT BYRNE

There never was a leading player as eccentric as Mikhail Chigorin. He was out of step with the prevalent views of his day all the time. However, he managed to challenge Wilhelm Steinitz twice for the world championship, in 1889 and again in 1892, and in their second match, in Moscow, he came close to beating him, losing 12½ to 10½.

Chigorin loved knights, but he almost never persuaded his fellow top players to adopt his view that they should be preferred to bishops. Nevertheless every once in a while someone gives a pretty good imitation of the way Chigorin conceived of chess battles.

Such contests are rare, yet all players should familiarize themselves with what he hoped to gain from knights. In the struggle between the grandmasters Alexander Onischuk of the United States and Kamil Miton of Poland at the Empresa Tournament in Montreal, which was held from Aug. 8 to 16, Black thumbed his nose once again at the mighty bishops and won. Miton ended up with a 6-3 score to take second, behind Pavel Eljanov of Ukraine, and Onischuk was 6th with 4-5.

After 2 ... dc, the Queen's Gambit Accepted arises. By ridding himself of his central d pawn, Black also rids himself of the chore of defending this important bulwark in the middle of the board. But now he must prove that he can get along without ceding important terrain to White. It's an old, primitive, sharp strategy that has cropped up again and again over the years.

When White omits 3 Nf3, in favor of 3 e4, to prevent his opponent from counterattacking with 3 ... e5, Black does not end the central struggle, but sharpens it with 3 ... Nc6. And so the battle goes on with 4 Nf3 Bg4 5 Bc4. At this point, 5 ... Bf3 6 Qf3 would have just speeded White's development.

With 6 Bb5 Bf3 7 gf, Onischuk got the bishop pair and doubled f pawns.

After 13 f4 ef 14 Bf4, Onischuk no longer had any doubled pawns.

Perhaps, after 14 ... O-O, Onischuk should have played 15 Qh5.

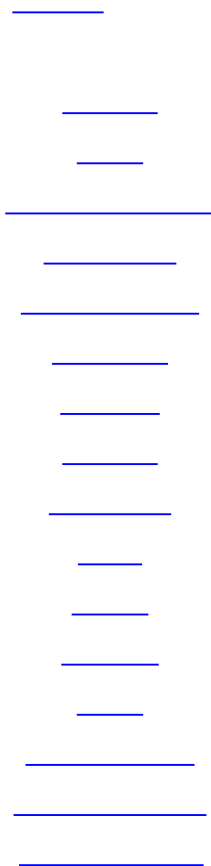
But with 18 Qa4, what was the white Queen doing on this end of the yard? The mates have to be played on the other side.

With 22 Be2 c5, the knights were now getting the kind of closed position where knights work better than bishops.

In view of the Black attack that Onischuk was facing after 27 ... cb, he felt he had to get the queens off with 28 Qh3 Kh7 29 Qe6.

But 30 de g5 showed that Onischuk was probably under time pressure.

After 36 ... h3, what with pawns dancing around like ants at a picnic, White a piece down, and mating threats in the background, Onischuk gave up.



[Copyright 2006 The New York Times Company](#)

- [Privacy Policy](#)
- [Search](#)