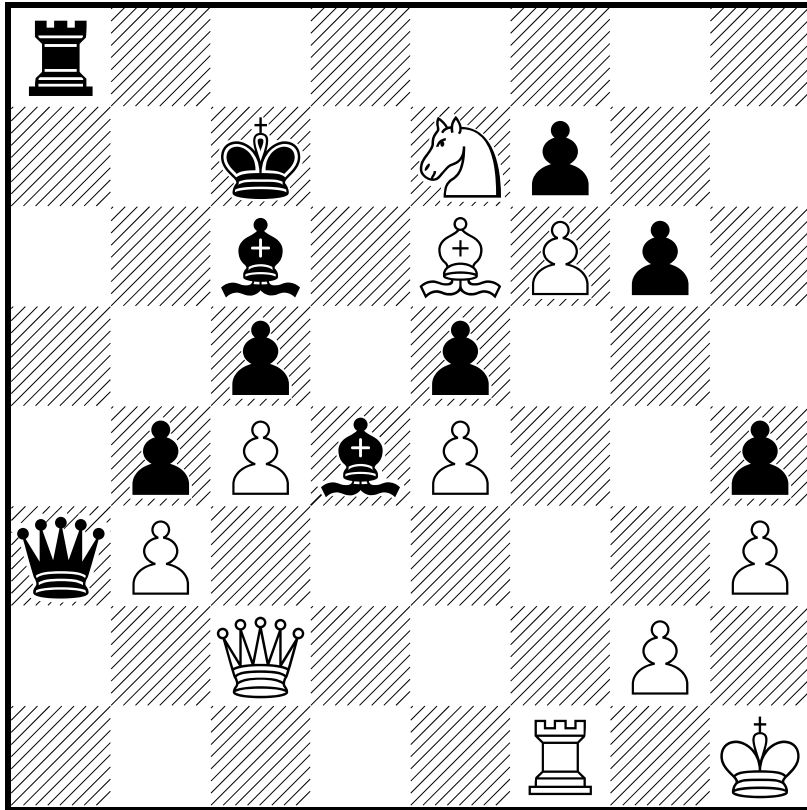
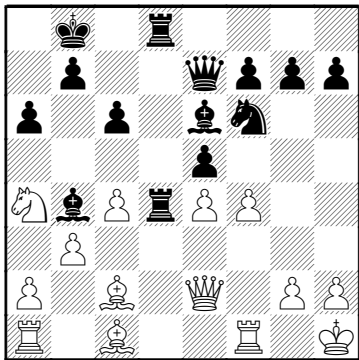


- Critelli,J
- Bruzon,L



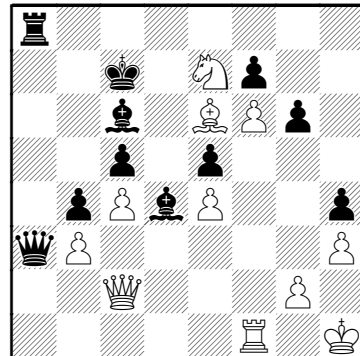
Critelli,J **B41**
 Bruzon,L **2318**
 American Continental 06.08.2005 **2662**

1.e4 c5 2.♘f3 e6 3.d4 cxd4
 4.♗xd4 a6 5.c4 ♘f6 6.♗c3
 ♙b4 7.♙d3 ♘c6 8.♗xc6 dxc6
 9.0-0 e5 10.♖h1 ♗e7 11.f4
 ♙g4 12.♗e1 0-0-0 13.♙c2
 ♙e6 14.♗e2 ♗d4 15.♗a4 ♖b8
 16.b3 ♗hd8



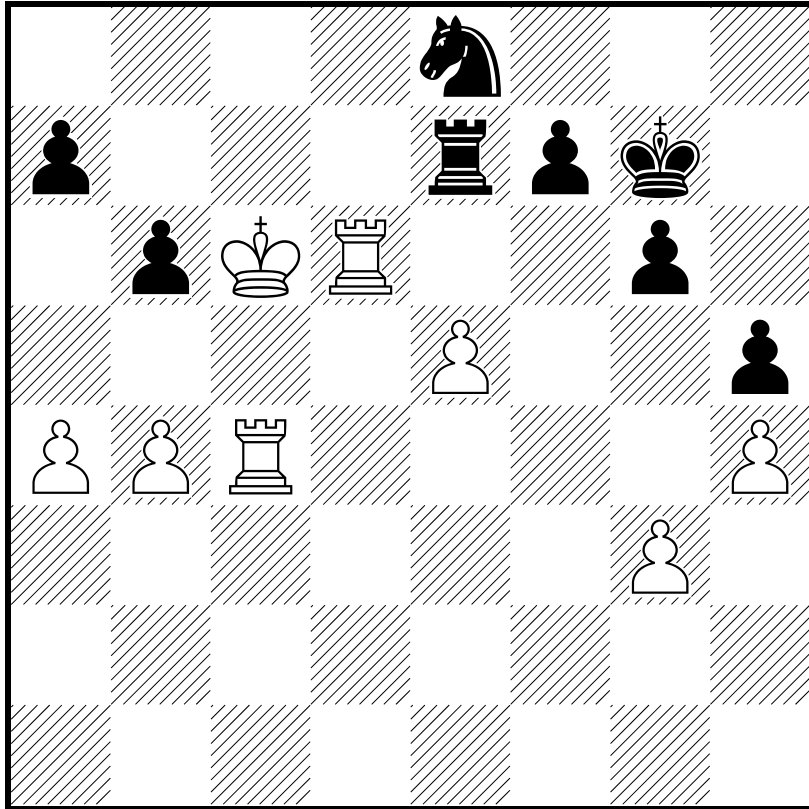
El corredor central es una
 autopista 17.f5 ♙c8 18.♗f3 b5
 19.♗b2 ♙d2 20.♙d3 ♙c3
 21.♙c2 b4 Nueva fortaleza que
 clava definitivamente al caballo
 22.♗b1 ♙b7 23.♙e3 c5
 Oferta de calidad a cambio de
 un peón pasado 24.♙g5
 Pensando en otras posibilidades,
 la ventaja del negro en el
 dominio del espacio es notable
 ♙c6 25.♗d1 ♙d2 26.♙xf6
 ♗xf6 27.♗f2 ♙c3 28.♗g4

♗d6 Ahora se tiene un super
 corredor 29.f6 g6 30.♗e3 ♗d2
 31.♗bd1 ♗xd1 32.♗xd1 ♙d4
 33.♗d5 h5 34.♗f1 ♙d7
 35.♗g3 ♖b7 36.♗h4 ♗h8
 37.h3 a5 38.♗f3 ♗f8 39.♗g5
 h4 40.♗f1 ♗a8 41.♙d1 a4
 42.♙g4 axb3 Ganancia de
 tiempo el alfil sigue incolumne
 apesar de la soledad en que
 está 43.axb3 ♙c6 44.♗d2
 ♗a3 45.♗c2 ♗a8 46.♗e7 ♖c7
 47.♙e6



♗a1 La invasión del último
 flanco aprovecha el encierro del
 rey 48.♗e2 [48.♗xa1 ♗xa1+
 49.♖h2 ♙g1+ 50.♖h1 ♙f2+
 51.♖h2 ♙g3#] 48...♗a2
 Natural. Desvía la última
 defensa 49.♗e1 ♗b2
 Traslada el problema a otro
 punto pero las amenazas son
 graves 50.♗g1 ♙xg1 51.♗xg1
 ♗a1 Lo mejor es firmar
 0-1

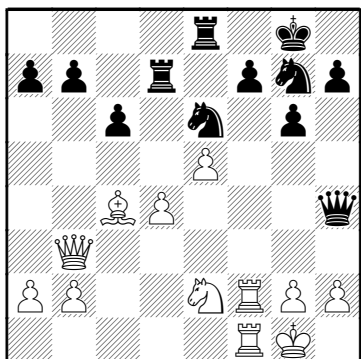
- Bruzon,L
- Soppe,G



D36

□ Bruzon,L 2662
 ■ Soppe,G 2432
 American Continental 07.08.2005

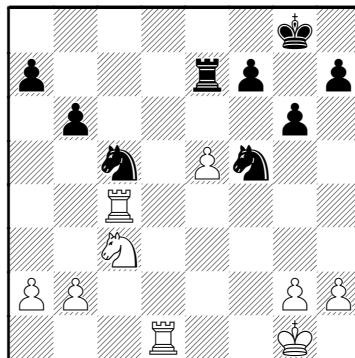
1.d4 d5 2.c4 e6 3.♘c3 ♘f6
 4.cxd5 exd5 5.♙g5 c6 6.e3
 ♙e7 7.♙d3 ♘bd7 8.♘ge2 0-0
 9.♚c2 ♖e8 10.0-0 ♘f8 11.f3
 ♘h5 12.♙xe7 ♚xe7 13.e4
 dxe4 14.fxe4 ♙e6 15.e5 ♖ad8
 16.♘e4 ♙d5 17.♖f2 ♙xe4
 18.♙xe4 g6 19.♖af1 ♖d7
 20.♙d3 ♘e6 21.♙c4 ♚h4
 22.♚b3 ♘hg7



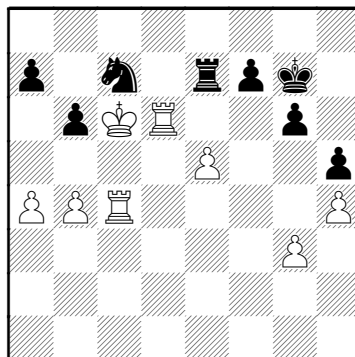
23.d5 cxd5 24.♙b5 ♖ed8
 25.♙xd7 ♖xd7 26.♘c3 ♘c5
 27.♚b5 ♚c4 28.♚xc4 dxc4
 29.♖f4 ♘f5 30.♖xc4 b6
 31.♖d1 ♖e7

(Diagrama)

32.b4 ♘a6 33.♖e4 ♙g7
 34.♙f2 h5 35.♘d5 ♖e8



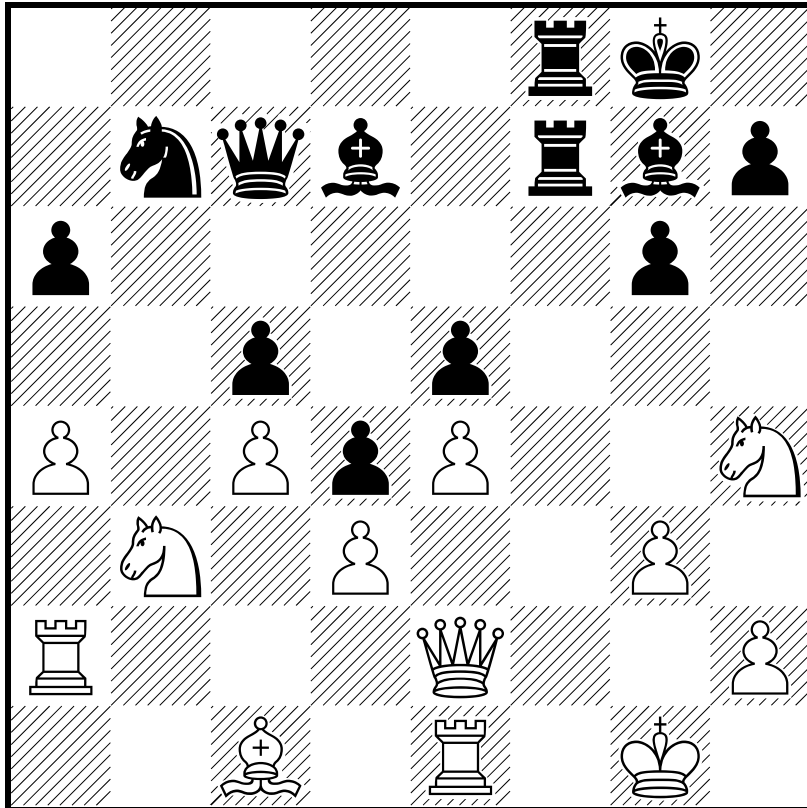
36.♘e3 ♘xe3 37.♙e3 ♖e7
 38.♖d6 ♘c7 39.h4 ♘e6
 40.♖c4 ♘c7 41.♙e4 ♘e6
 42.g3 ♘c7 43.a4 ♘e6 44.♙d5
 ♘c7+ 45.♙c6



♘e8 46.♖d7 ♖xe5 47.♖f4
 ♖e6+ 48.♙b5 ♘d6+ 49.♙a6
 b5 50.axb5 ♙f8 51.♖xd6
 ♖xd6+ 52.♙xa7 ♖d7+ 53.♙a6

1-0

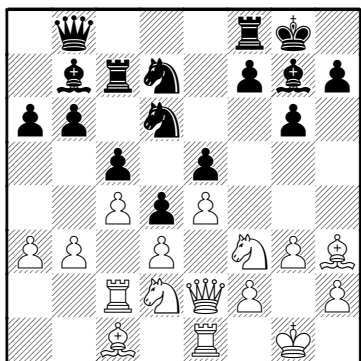
- Sunye Neto,J
- Bruzon,L



A14

☐ Sunye Neto,J 2530
 ■ Bruzon,L 2662
 American Continental 08.08.2005

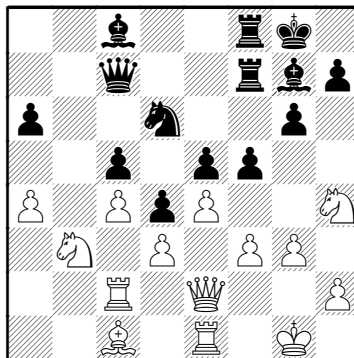
1.c4 e6 2.♘f3 d5 3.b3 ♘f6
 4.♙b2 ♙e7 5.g3 0-0 6.♙g2
 b6 7.0-0 ♙b7 8.e3 ♘bd7
 9.♘c3 c5 10.♚e2 ♖c8 11.d3
 a6 12.♖ac1 ♖c7 13.♗fe1 ♚b8
 14.e4 d4 15.♘b1 e5 16.♙h3
 ♘e8 17.♖c2 ♙f6 18.♙c1 ♘d6
 19.♘bd2 g6 20.a3 ♙g7



21.♙xd7 ♖xd7 22.b4 ♚c8
 23.bxc5 bxc5 24.♘h4 f5 25.f3
 ♖df7 26.♘b3 ♚c7 27.a4 ♙c8

(Diagrama)

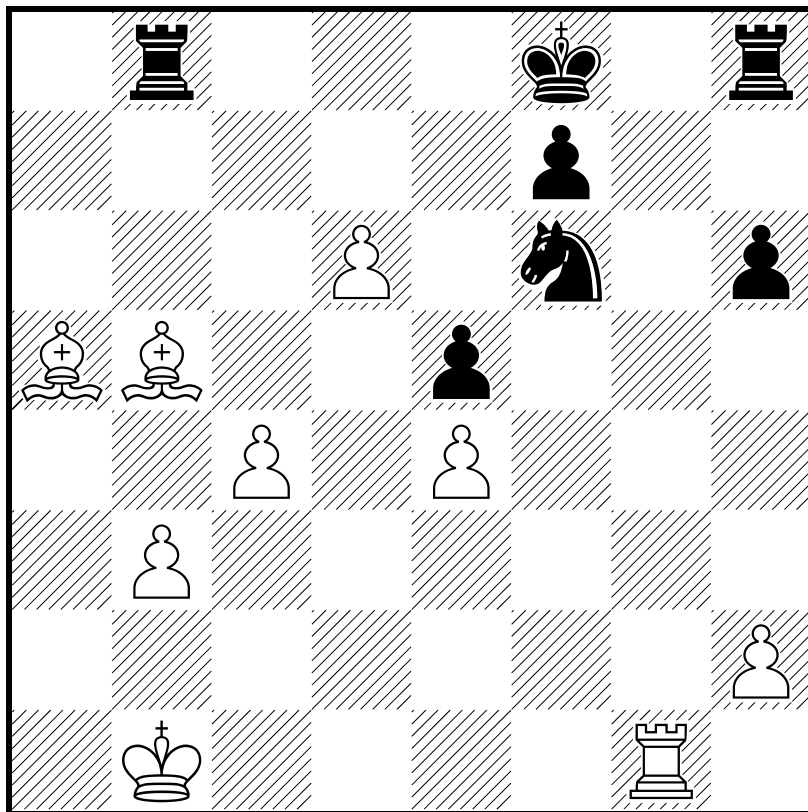
28.♙a3 ♘b7 29.♙c1 ♙d7
 30.♖a2 fxe4 31.fxe4
 ♙h3 32.♘g2 ♘d8 33.♙d2



♘e6 34.♖aa1 ♖f2

0-1

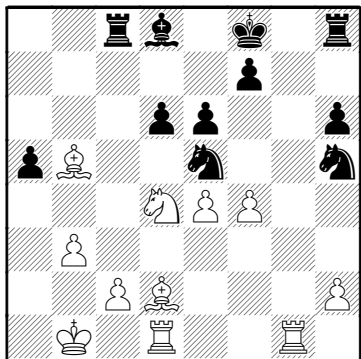
- Bruzon,L
- Milos,G



B80

□ Bruzon,L 2662
 ■ Milos,G 2606
 American Continental 09.08.2005

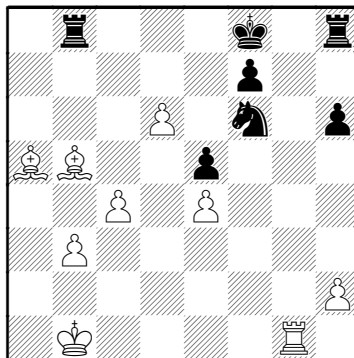
1.e4 c5 2.♘f3 d6 3.d4 cxd4
 4.♘xd4 ♘f6 5.♘c3 ♘c6
 6.♙g5 e6 7.♚d2 a6 8.0-0-0
 ♙d7 9.f3 ♙e7 10.♙e3 b5
 11.♚b1 ♘e5 12.a3 ♚b8 13.g4
 b4 14.axb4 ♚xb4 15.g5 ♖b8
 16.b3 ♘h5 17.♘a2 ♚xd2
 18.♙xd2 ♖a8 19.♖g1 h6
 20.gxh6 gxh6 21.♘b4 a5
 22.♘a6 ♚f8 23.♘c7 ♖c8
 24.♘cb5 ♙xb5 25.♙xb5 ♙d8
 26.f4



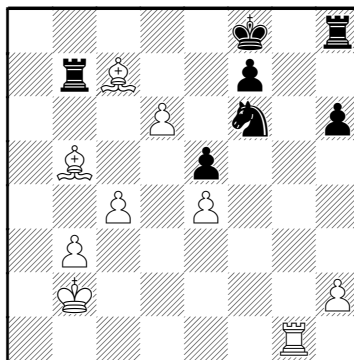
♙b6 27.fxe5 ♙xd4 28.exd6
 ♙xg1 29.♖xg1 ♖b8 30.c4 e5
 31.♙xa5 ♘f6

(Diagrama)

32.♙c7 ♖b7 33.♚b2
 ♘xe4 34.♙c6 ♖xc7 35.dxc7



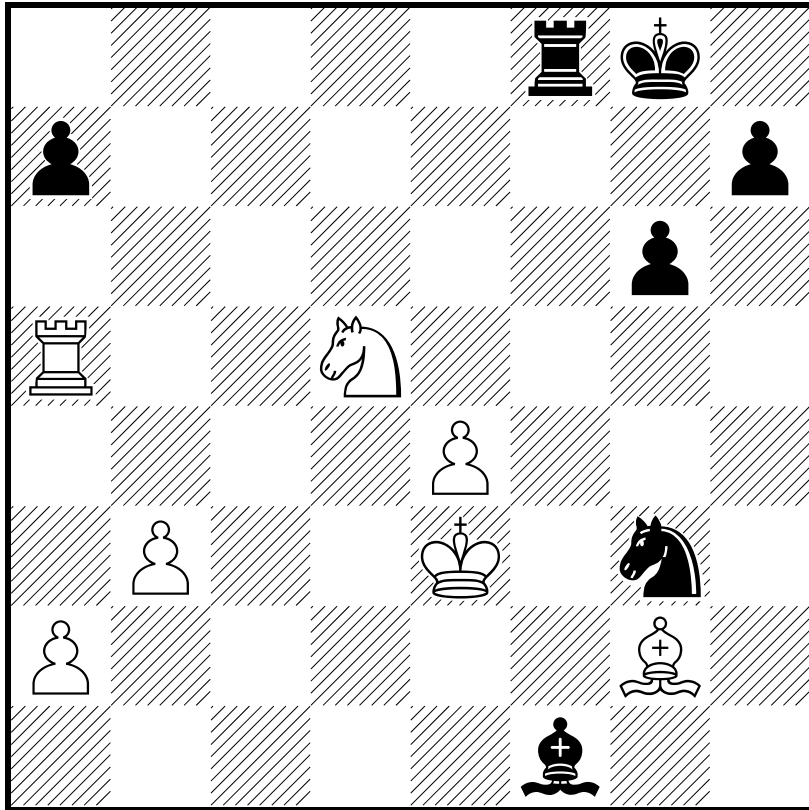
○



●

♘d6 36.c5 ♘c8 37.♖d1
 1-0

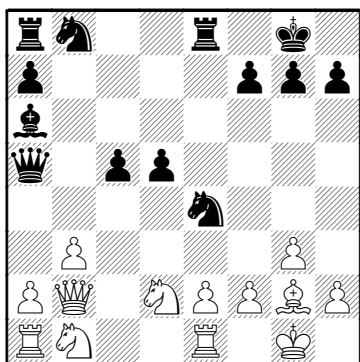
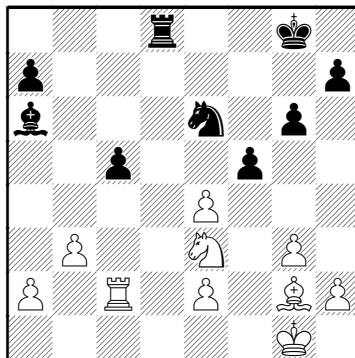
- Bruzon,L
- Ibragimov,I



E15

□ Bruzon,L 2662
 ■ Ibragimov,I 2605
 American Continental 13.08.2005

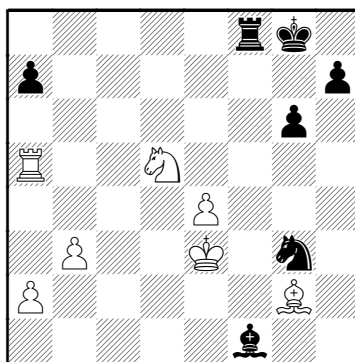
1.♘f3 ♘f6 2.c4 b6 3.d4 e6
 4.g3 ♔a6 5.b3 d5 6.cxd5
 exd5 7.♙g2 ♙b4+ 8.♙d2
 ♙xd2+ 9.♚xd2 ♘e4 10.♚b2
 0-0 11.0-0 ♖e8 12.♖e1 c5
 13.dxc5 bxc5 14.♘fd2 ♚a5



15.♚a3 ♚xa3 16.♘xa3 ♘d7
 17.♘xe4 dxe4 18.♖ac1 f5
 19.♘c2 ♖ac8 20.♘e3 g6
 21.♖c2 ♘f8 22.♗d1 ♖ed8
 23.♖xd8 ♖xd8 24.f3 ♘e6
 25.fxe4

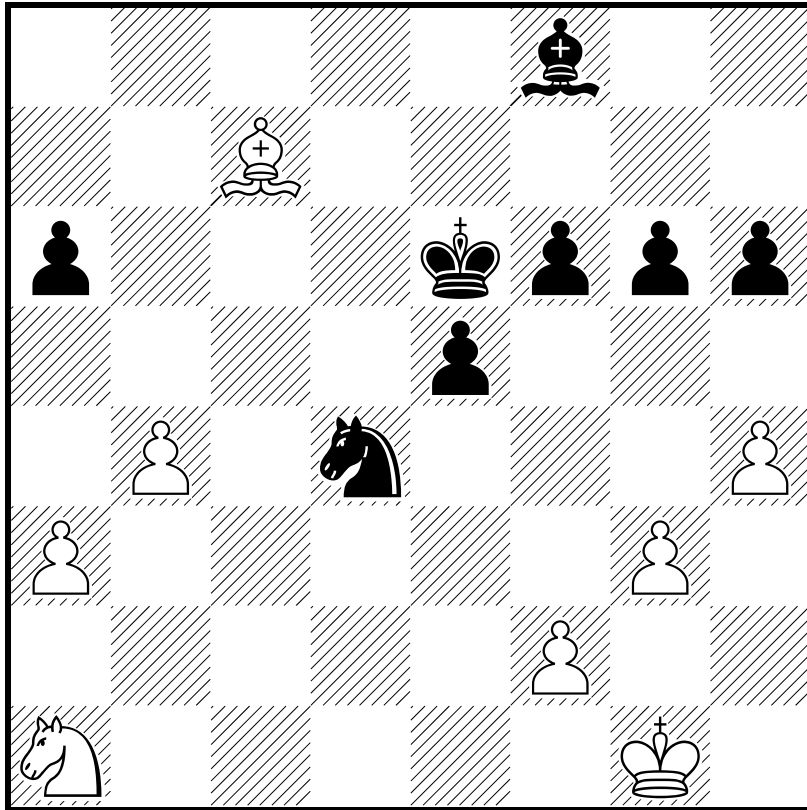
(Diagrama)

f4 26.♘d5 ♘d4 27.♖xc5
 ♘xe2+ 28.♔f2 fxc3+ 29.hxc3
 ♖f8+ 30.♔e3 ♘xc3 31.♖a5
 ♙f1 Diagrama



32.♙xf1 ♘xf1+ 33.♔d4 ♖f7
 34.e5 ♘g3 35.e6 ♖b7 36.♔e5
 ♘f5 37.♔f6 ♘d6 38.♖a4 g5
 39.♔e5 ♘e8 40.♖c4 ♖b8
 41.♖a4 ♔g7 42.♖xa7+ ♔g6
 43.♖f7 h5 44.♖f8 h4 45.♖g8+
 ♔h6 46.e7 ♖a8 47.a4 h3
 48.♖h8+ ♔g6 49.♖xh3 ♖a5
 50.♖h8 ♔f7 51.♖f8+
 1-0

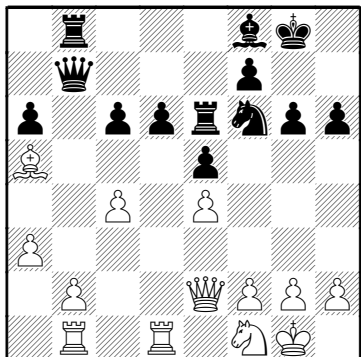
- Spraggett,K
- Bruzon,L



C48

□ Spraggett,K 2592
 ■ Bruzon,L 2662
 American Continental 14.08.2005

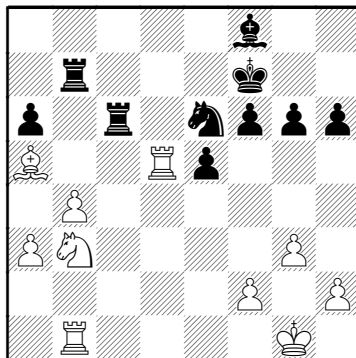
1.e4 e5 2.♘f3 ♘c6 3.♙b5
 ♘f6 4.♘c3 ♙d6 5.d3 a6
 6.♙a4 h6 7.♘e2 0-0 8.♘g3
 ♖e8 9.a3 b5 10.♙b3 ♙f8
 11.0-0 d6 12.♙d2 ♙e6
 13.♙xe6 ♖xe6 14.c4 bxc4
 15.dxc4 ♘d4 16.♙a5 ♘xf3+
 17.♚xf3 ♚b8 18.♖ab1 ♚b7
 19.♖fe1 c6 20.♚e2 g6
 21.♖ed1 ♖b8 22.♘f1



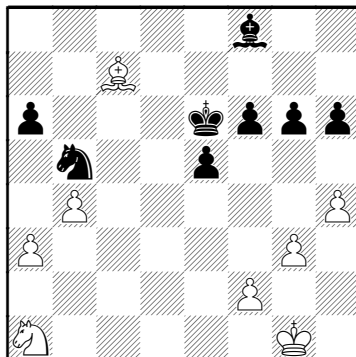
d5 23.exd5 cxd5 24.cxd5
 ♘xd5 25.♚e4 ♘f4 26.♚xb7
 ♖xb7 27.♖d8 ♔g7 28.♘d2
 ♖c6 29.g3 ♘e6 30.♖d5 f6
 31.b4 ♔f7 32.♘b3

(Diagrama)

♖c2 33.h4 ♖a2 34.♖a1 ♖xa1+
 35.♘xa1 ♘d4 36.♙d8 ♖b8



37.♙a5 ♖c8 38.♖d7+ ♔e6
 39.♖c7 ♖xc7 40.♙xc7 ♘b5



0-1