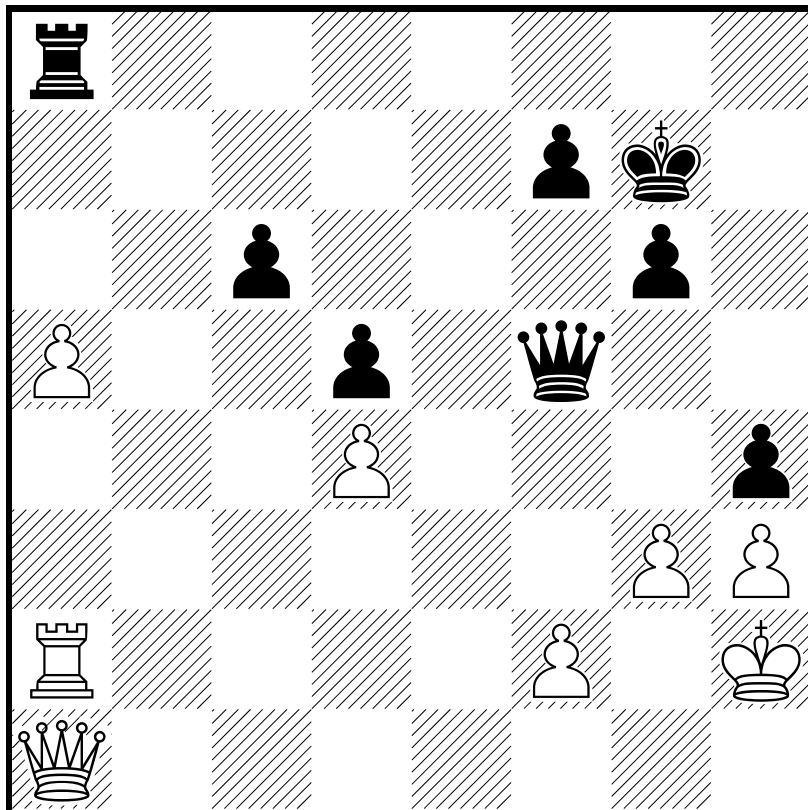


□ Kramnik,V
■ Bareev,E



D13

□ Kramnik,V 2739

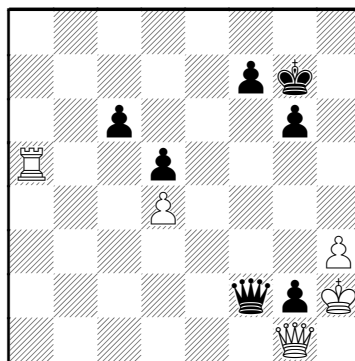
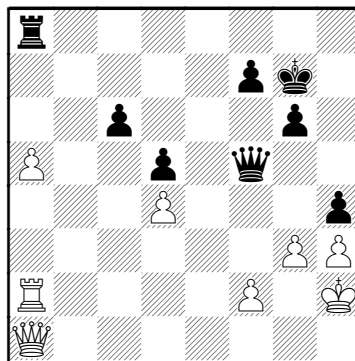
■ Bareev,E 2675

ch-RUS Superfinal 24.12.2005

1.d4 d5 2.c4 c6 3.♘f3 ♘f6
 4.♘c3 a6 5.cxd5 cxd5 6.♙f4
 ♘c6 7.♖c1 ♙f5 8.e3 ♖c8
 9.♙e2 e6 10.0-0 ♙d6 11.♙xd6
 ♚xd6 12.♘a4 0-0 13.♚b3
 ♖c7 14.♘c5 ♖b8 15.♖c3 ♙g4
 16.h3 ♙xf3 17.♙xf3 e5
 18.♚b6 exd4 19.exd4 g6
 20.♖d1 h5 21.b4 ♔g7 22.♙e2
 ♘d7 23.♘xd7 ♖xd7 24.b5
 axb5 25.♙xb5 ♘d8 26.♚a7
 ♖e7 27.♚c5 ♖e6 28.♖b1 ♖a8
 29.a4 ♘c6 30.♚b6 ♚e7
 31.♙xc6 ♖e1+ 32.♔h2 ♚d6+
 33.g3 ♖xb1 34.♚xb1 bxc6
 35.♚a1 ♚f6 36.♖c2 h4 37.a5
 ♚f5 38.♖a2

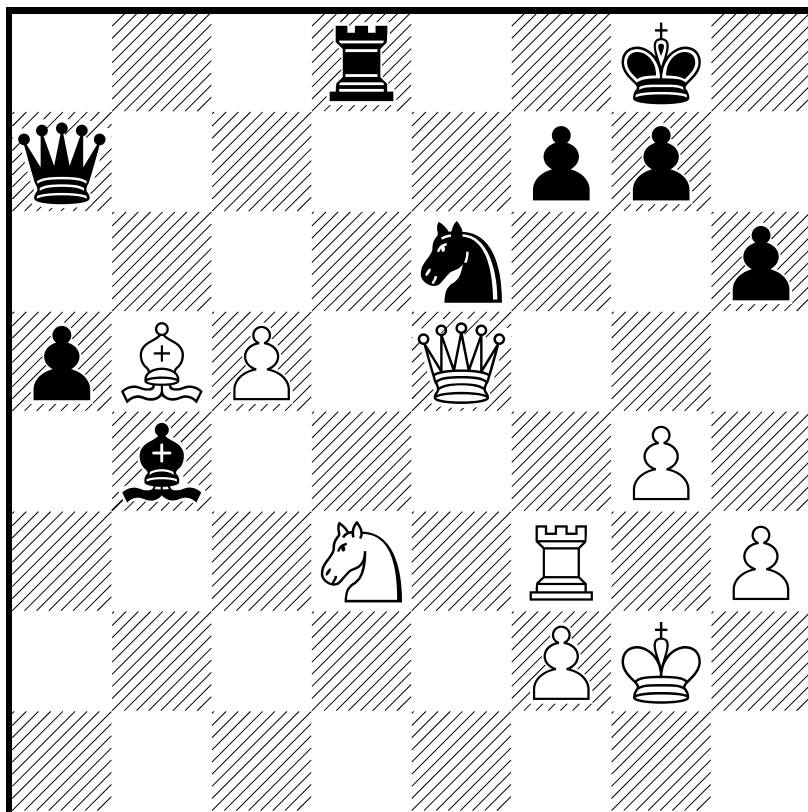
(Diagrama)

♖xa5 39.♖xa5 ♚xf2+ 40.♔h1
 hxg3 41.♚g1 g2+ 42.♔h2
 Diagrama [42.♚xg2 ♚e1+]
 42...♚f4+ 43.♔xg2 ♚d2+
 44.♔g3 ♚xa5 45.♚e3 ♚c7+



46.♔g2 ♚d6
 0-1

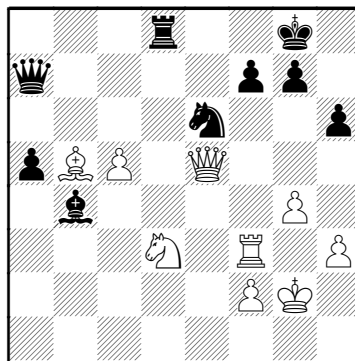
□ Dreev,A
■ Volkov,S1



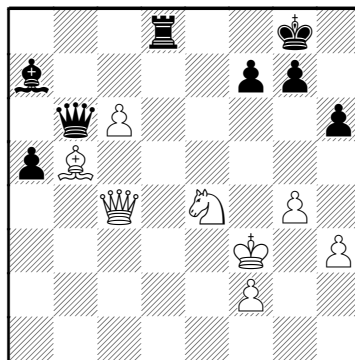
D10

□ Dreev,A 2694
 ■ Volkov,S1 2614
 ch-RUS Superfinal 24.12.2005

1.d4 d5 2.c4 c6 3.♘c3 ♘f6
 4.e3 a6 5.♖c2 b5 6.b3 ♕g4
 7.♗ge2 ♗bd7 8.h3 ♕xe2
 9.♕xe2 e6 10.0-0 ♕e7 11.e4
 dxe4 12.♗xe4 0-0 13.♞d1
 bxc4 14.bxc4 ♖c7 15.♞b1
 ♞fb8 16.♞b3 ♞xb3 17.axb3
 ♞b8 18.♕f3 a5 19.♕e3 h6
 20.♗c3 e5 21.♗a4 ♖b7
 22.♞a1 ♕d6 23.♞e1 ♕b4
 24.♞e2 ♕f8 25.♞d2 exd4
 26.♕xd4 ♖xb3 27.♕xc6 ♖b1+
 28.♖d1 ♖f5 29.♕b5 ♕b4
 30.♞e2 ♗f8 31.♞e5 ♖g6
 32.♞e3 ♞d8 33.♞g3 ♖f5
 34.♖a1 ♗h5 35.♞f3 ♖c2
 36.♗b6 ♗e6 37.♕a4 ♖g6
 38.♗d5 ♖e4 39.♕b6 ♞b8
 40.♕b5 ♗hf4 41.♗xf4 ♞xb6
 42.♗d3 ♞d6 43.♞e3 ♖f5
 44.♖f1 ♗c5 45.g4 ♖f6
 46.♔g2 ♗e6 47.♞f3 ♖d4
 48.♖e2 ♞d8 49.♖e5 ♖a7
 50.c5 Diagrama
 ♗d4 51.c6 ♗xf3 52.♔xf3

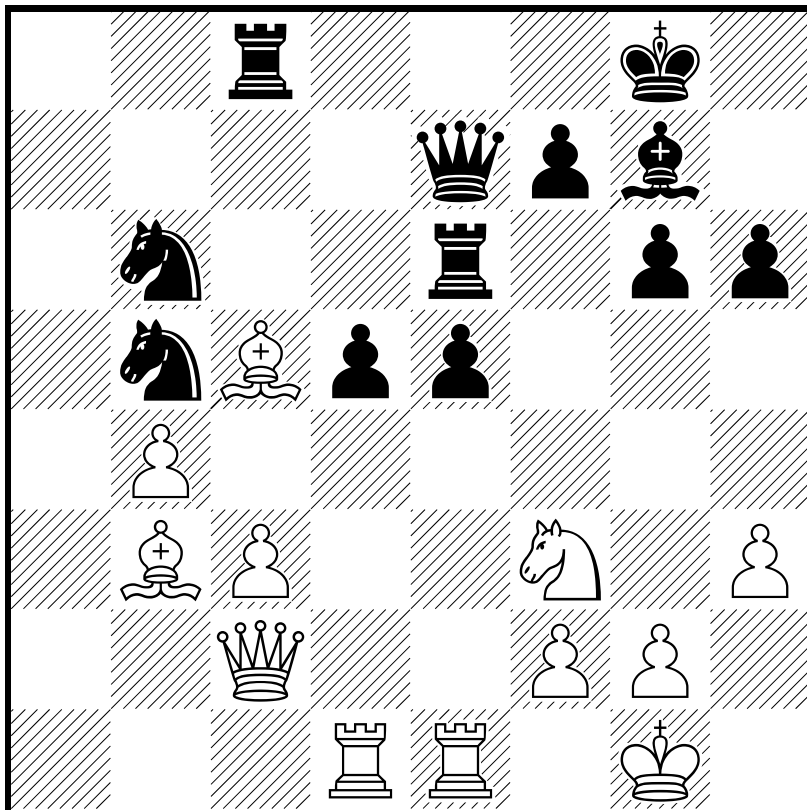


♕d6 53.♖e4 ♖b6 54.♖c4 ♕b8
 55.♗c5 ♕a7 56.♗e4



♞d4 57.♖c2 ♕b8 58.♕a4 ♖c7
 59.♗c3 ♖f4+ 60.♔e2 ♖e5+
 0-1

□ Motylev,A
■ Jakovenko,D



C93

□ Motylev,A 2632

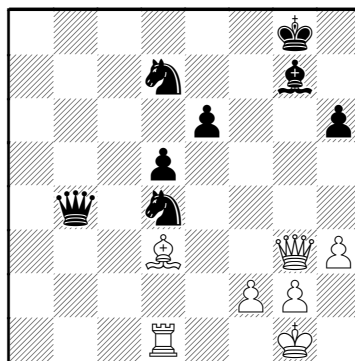
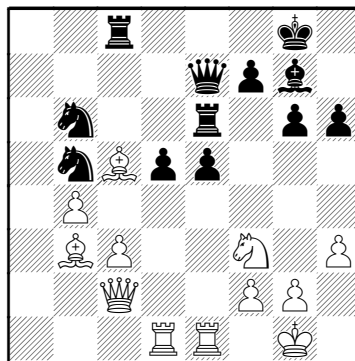
■ Jakovenko,D 2644

ch-RUS Superfinal 24.12.2005

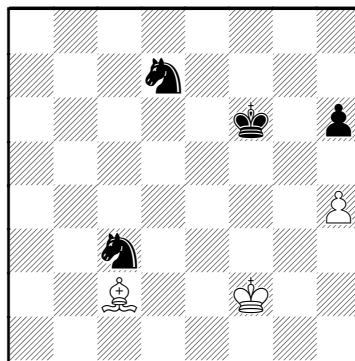
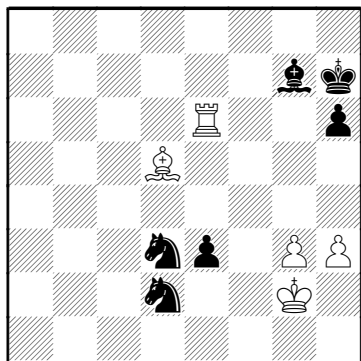
1.e4 e5 2.♘f3 ♘c6 3.♙b5 a6
 4.♙a4 ♘f6 5.0-0 ♙e7 6.♞e1
 b5 7.♙b3 0-0 8.c3 d6 9.h3
 ♞e8 10.d4 ♙b7 11.♘bd2 ♙f8
 12.a3 h6 13.♙c2 ♘b8 14.b3
 ♘bd7 15.♙b2 g6 16.a4 c6
 17.♙d3 ♙g7 18.♚c2 ♘h5
 19.♞ad1 ♘f4 20.♙f1 ♘e6
 21.d5 cxd5 22.axb5 axb5
 23.♙xb5 ♘c7 24.♙a4 ♞e6
 25.b4 dxe4 26.♘xe4 ♙xe4
 27.♞xe4 d5 28.♞ee1 ♘b6
 29.♙b3 ♚e7 30.♙c1 ♞c8
 31.♙e3 ♘b5 32.♙c5

(Diagrama)

♞xc5 33.bxc5 ♚xc5 34.♘d4
 exd4 35.♞xe6 fxe6 36.♚xg6
 ♚e7 37.cxd4 ♘d7 38.♚g3
 ♚b4 39.♙c2 ♘xd4 40.♙d3
 Diagrama
 ♚b8 41.♚xb8+ ♘xb8 42.♞b1
 ♘d7 43.g3 e5 44.♙g6 e4
 45.♙g2 ♘e5 46.♙e8 ♙h7



47.♞d1 ♘d3 48.♞b1 ♘c2
 49.♞b7 ♘e5 50.♙a4 ♘d4
 51.♞b8 ♘df3 52.♙b3 d4
 53.♙d5 ♘d2 54.♞b2 e3
 55.fxe3 dxe3 56.♞b6 ♘d3
 57.♞e6 Diagrama

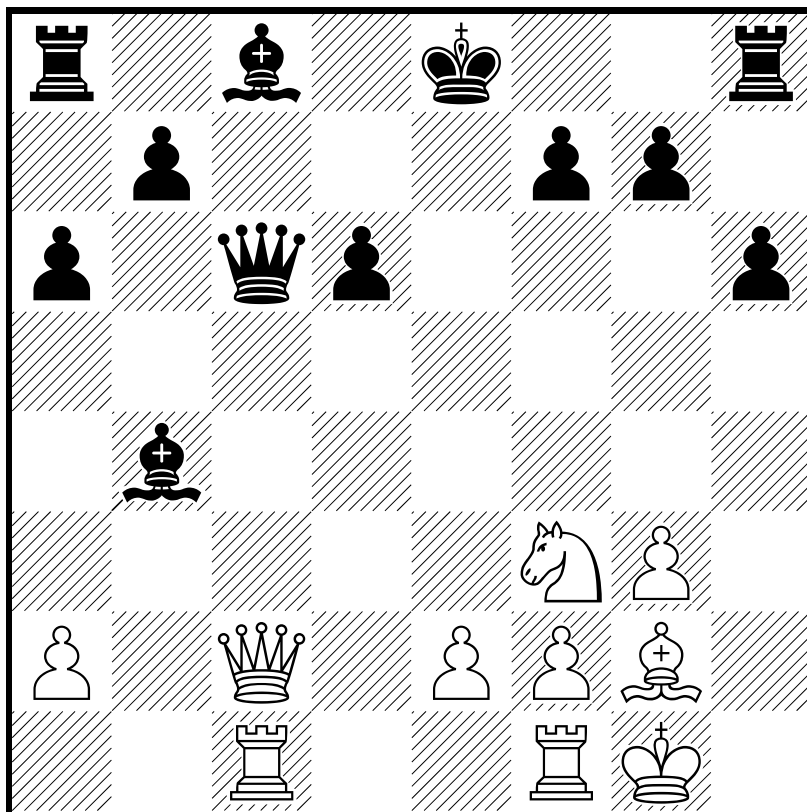


♙e5 58.♙b7 e2 59.♖xe5
♜xe5 60.♗f2 ♜f1 61.♗xe2
♜xg3+ 62.♗e3 ♜h5 63.♗e4
♜f7 64.♙c6 ♗g6 65.h4 ♗f6
66.♙a4 ♜e5 67.♙c2 ♜g7
68.♗f4 ♜e6+ 69.♗g3 ♜d4
70.♙b1 ♜e2+ 71.♗f2 ♜c3
72.♙c2 ♜d7

(Diagrama)

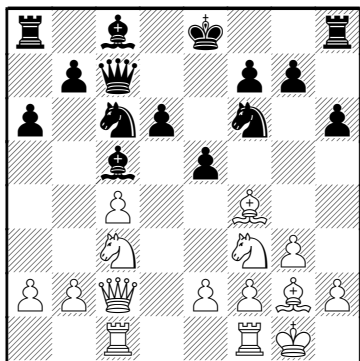
0-1

Bareev,E
 Morozevich,A



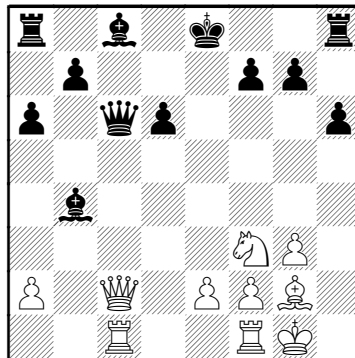
Bareev,E **E38**
2675
 Morozevich,A **2707**
 ch-RUS Superfinal 26.12.2005
[Chessbase]

1.d4 ♘f6 **2.c4** e6 **3.♘c3** ♙b4
4.♚c2 c5 **5.dxc5** ♚c7 **6.♗f3**
 ♙xc5 **7.g3** a6 **8.♙f4** d6 **9.♙g2**
h6 **10.♖c1** ♘c6 **11.0-0** e5



12.♗d5 ganancia de tiempo que desordena el plan del negro **♗xd5** **13.cxd5** **exf4** **14.dxc6** **fxg3** **15.hxg3** ♚xc6
 La dama queda al alcance del alfil en g2 y es posición es explotada por el blanco **16.b4**

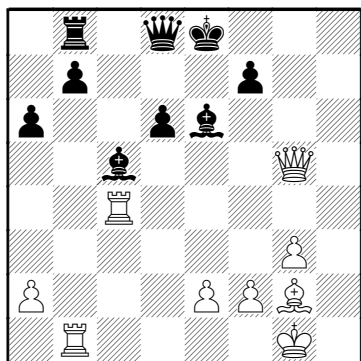
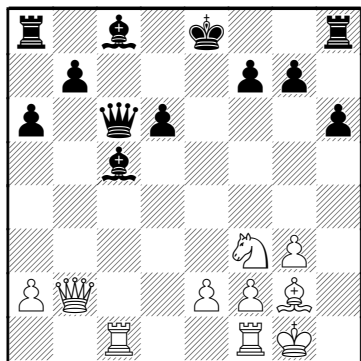
comienza el ataque del blanco
 ♙xb4? [16...♙b6]



17.♚b2 Ataque triple a la dama, al alfil y al peón g7 ♙c5
 Diagrama

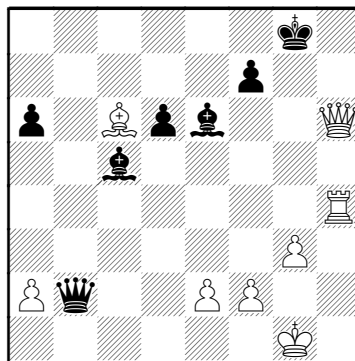
(Diagrama)

18.♗g5 ♚d7 **19.♚xg7** hxg5 forzada **20.♚xh8+** ♔e7
 El blanco solo debe ocuparse de concretar la ventaja **21.♖c4** ♚d8 **22.♚g7** ♙e6 **23.♖b1** ♖b8
24.♚xg5+ ♔e8 Diagrama **25.♙c6+** ♔f8 [25...bxc6
 26.♖xb8 ♚xb8 **27.♚g8+** ♔d7
 28.♚xb8] **26.♚h6+** ♔e7
27.♚h4+ [27.♖xb7+ ♖xb7



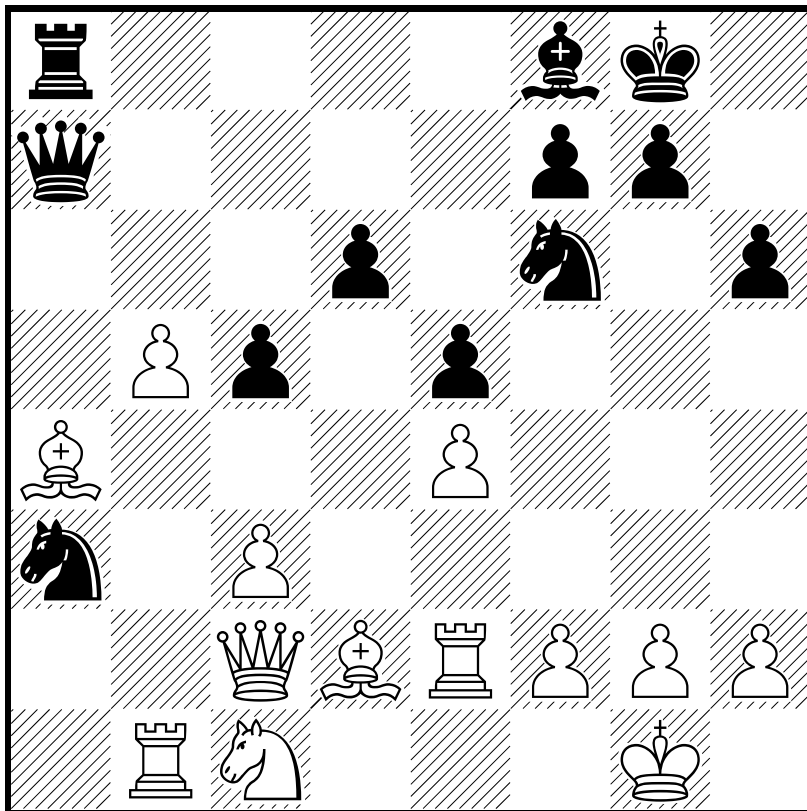
28. ♖g5+ ♔f8 29. ♖xd8+ ♔g7
 30. ♖g5+ ♔f8 31. ♜h4 ♘d4
 32. ♖d8+ ♔g7 33. ♖h8+ ♔g6
 34. ♖h6+ ♔f5 35. ♜h5+ ♔g4
 36. ♖g5#] 27... ♔f8 28. ♜xb7
 ♔g7 29. ♜xb8 La amenaza

contra la dama continúa ♖xb8
 30. ♖g5+ ♔f8 31. ♖h6+ ♔g8
 32. ♜h4 ♖b2



33. ♖g5+
 1-0

Jakovenko,D
 Tomashevsky,E



C88
 □ Jakovenko,D 2644
 ■ Tomashevsky,E 2564
 ch-RUS Superfinal 26.12.2005

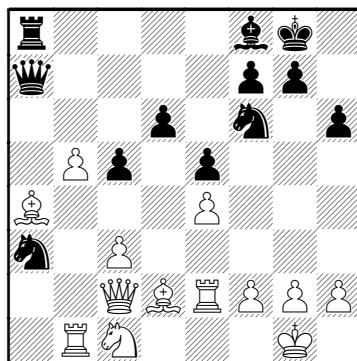
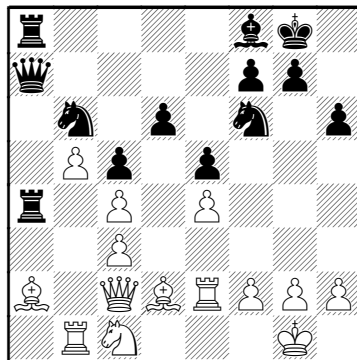
1.e4 e5 2.♘f3 ♘c6 3.♙b5 a6
 4.♙a4 ♗f6 5.0-0 b5 6.♙b3
 ♙b7 7.d3 ♙e7 8.♖e1 0-0
 9.♗bd2 h6 10.a4 ♖e8 11.c3
 ♙f8 12.♙a2 d6 13.axb5 axb5
 14.♚b3 Ataque doble a los

peones b5 y f7 ♚d7 15.♚xb5
 ♖eb8 16.♚b3 ♖a7 17.♚c2

La dama se refugia y el
 problema es resistir la presión
 sobre el alfil a2 que se ve venir
 ♖ba8 18.b4 ♙a6 19.♗c4 ♙xc4
 20.dxc4 ♗d8 21.♗d2 c5
 22.♗b3 ♗c6 23.♙d2 ♖a4
 24.b5 ♗e7 25.♗c1 Refuerza la
 casilla a2 donde el blanco a
 puesto toda la presión del juego
 ♚a7 26.♖e2 ♗c8 27.♖b1 ♗b6

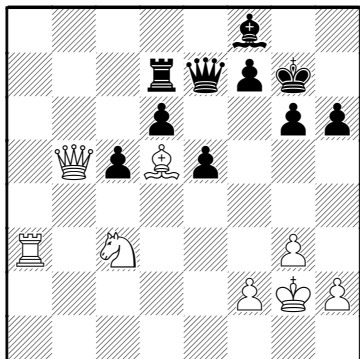
(Diagrama)

28.♙b3 ♗xc4 entrega de
 calidad a cambio de peones
 29.♙xa4 ♗a3



30.b6 contraataque sorpresa,
 aceptar el intercambio de damas
 es peligroso por el poder del
 peon en la penúltima línea ♚b7
 [30...♗xc2 31.bxa7 ♗d4]
 31.♚b3 ♗xb1 32.♙e1

El caballo negro conoce que su
 suerte está marcada ♘xe4
 33.♞a2 ♘bxc3 34.♙xc3 ♘xc3
 35.♚xc3 ♚xb6 36.♙b3 ♞c8
 37.♚c4 ♞c7 38.♞a4 g6 39.g3
 ♙g7 40.♘e2 ♞b7 41.♙a2 ♚c6
 42.♞a3 ♞d7 43.♘c3 ♚f3
 44.♚a4 ♚b7 45.♙d5 ♚c7
 46.♙g2 ♚d8 47.♚b5 ♚e7



48.♚b6
 1-0